

hackneytoday

THE PAPER FOR ALL HACKNEY PEOPLE

Circulated to 108,000 homes and businesses in Hackney

Issue 185 09 June 2008



Get ready for the Tour de Hackney

By Emma Britton

TAKE to two wheels this summer and join Hackney's first borough-wide mass cycling event to mark the build up to the London Olympic & Paralympic Games. Tour de Hackney – on 17 August – will travel a 12 mile route around Hackney, with a shorter circuit of Shoreditch Park for beginners.

You can join the Tour at any point, and enjoy the marshalled ride, taking in Hackney's most loved landmarks and parks. The ride starts and finishes at Shoreditch Park where a host of entertainment will be on show, including bike ballet, stunt cycling from Team Extreme (left) and safety advice.

Prizes and goodies will be up for grabs. Hackney Mayor, Jules Pipe, said: "This will really put us on the cycling map. It's fun, good for the environment and a great way to keep fit."

The Tour de Hackney is part of the Shoreditch Festival, and jointly funded by the Council and Shoreditch Trust.

Register your interest at:

www.hackney.gov.uk/tour-de-hackney

National Bike Week runs from 14 to 22 June. Find out what's going on in Hackney on pgs 6 & 7

inside

4



Feel the Spirit of Sport this summer

6-7



On the road with our guide to riding

9



Beekeepers' sweet taste of success

15



Get down with James Brown

16 WIN

Tickets to the Hackney Empire

28



Jobs

GETTING A FAIR DEAL

By James Willsher



HACKNEY has won praise after being officially recognised as a Fairtrade borough.

It is the culmination of two years hard work by campaigners and means Hackney is doing its bit to ensure a better deal for farmers and workers in poorer countries.

The local campaign was masterminded by the Hackney Fairtrade Group – a partnership of more than 60 residents, business people and councillors.

It has worked alongside the Council to promote Fairtrade principles in the borough and as a result, many local schools, businesses, religious and community groups have all signed up to the principle of only buying

ethically responsible goods. Hannah Reed, from the Fairtrade

“Hackney is a shining example of what can be achieved when people come together”

Foundation which certified the borough's status, said: "I sincerely congratulate Hackney on becoming a Fairtrade Borough.

"This achievement has involved a great deal of hard work and has succeeded in uniting many different parts of the community towards a common goal.

"It has also contributed significantly to the campaign to make

London a Fairtrade City.

"Hackney is a shining example of what can be achieved when people come together and I'd like to thank everyone who has been involved and urge others to come on board.

"With two billion working people around the world earning less than \$2 per day, now is the time to support Fairtrade."

CONTINUED PAGE 3



Host borough for 2012 Olympic and Paralympic Games



Message from the Mayor

Getting ahead with the green and the good

The announcement last week that Hackney has been awarded Fairtrade Borough status is a really positive sign that we are playing our part in tackling discrimination and injustice in the developing world by ensuring that farmers and workers get a better deal for the produce they sell. The Council has been using Fairtrade products for some time, but we are now able to show that Hackney has a range of shops, businesses and schools that support Fairtrade. Hackney's Fairtrade Group, chaired by Cllr Ian Rathbone and involving people from across the community, deserves a lot of the credit for this achievement. But, of course, we are committed to sustainability closer to home as well, which is why I am pleased that Hackney is increasingly being seen as a leader across London on green issues. Last month, Hackney became the first Council in the capital to sign up to a virtual carbon trading scheme, with genuine reduction targets, to prepare for the future when real financial penalties will be levied against carbon producing organisations. This follows on from our recognition at last year's Mayor of London Green Procurement Awards for using solar-powered pay-and-display machines, fuelling one of the country's greenest waste collection fleets with Biodiesel blend, and buying 100 per cent recycled and unbleached paper. And sustainability has more immediate benefits too: reducing the amount of energy we consume saves money as well as making a difference for the future. And the benefits of Fairtrade? Well, I can highly recommend the ginger biscuits...

Jules Pipe

Jules Pipe, elected mayor of Hackney



Makandianfing Keita (right) a producer of Fairtrade certified cotton from Mali, West Africa, spoke at a Hackney Fairtrade group meeting at the Town Hall about the struggles of his people and the benefits of Fairtrade. Born in Dougourakoroni village and still farming cotton there, he was elected by Malian cotton farmers to represent them at Fairtrade Fortnight in March.

All's fair in Hackney's shopping

From page one

Highlights of the two-year campaign include a business breakfast with Hackney resident and BBC newscaster George Alagiah; the signing of a Fairtrade multi-faith statement by Muslim, Jewish, and Christian community leaders and the Town Hall screening of Fairtrade film Black Gold, made by Hackney residents Marc and Nick Francis.

Cllr Ian Rathbone, Hackney Fairtrade Group co-ordinator, said: "We are very pleased to have achieved this status after all the hard work by members of the group, campaigning across the borough to get others involved."

The Hackney Fairtrade Group is now set to expand its campaign by encouraging more

businesses to sign up to a Fairtrade directory on the Council's website, and further develop links with producers in poorer countries. Since January, Fairtrade goods have been available at Council meetings, and are also used

throughout its offices. Mayor of Hackney, Jules Pipe, added: "I hope Hackney's Fairtrade movement will inspire more people to buy goods which mean a fairer part of the price goes to those who produce them – to help

improve their local environment."

MORE INFO

To get involved in Fairtrade in Hackney, call Ajamu Mutumwa on: **020 8356 7601**; or e-mail: ajamu.mutumwa@hackney.gov.uk

Getting involved:

- Buy Fairtrade products – tea, coffee, fruit, sugar, chocolate and clothes are available in Hackney
- Encourage your work place to stock Fairtrade tea, coffee and sugar
- If you attend community or faith meetings, encourage the use of Fairtrade refreshments

SCHOOLS:

- The Fairtrade Foundation offers targeted resources and materials for pupils of all ages. Call: **020 7440 7676**
- Schools can apply for their own Fairtrade status. Visit: www.fairtradeschools.net/schools
- Create a Fairtrade Ambassador programme within your school. Contact Cllr Ian Rathbone at: ian.rathbone@tiscali.co.uk

BUSINESSES:

- Offering customers the option of buying Fairtrade can increase sales, enhance your reputation and potentially attract new customers
- Find out more from the Fairtrade Foundation on: **020 7405 5942**, or visit: www.fairtrade.org.uk



Contents

| | | | |
|--------------------|----|-----------|----|
| Spirit of Sport | 4 | Education | 19 |
| National Bike Week | 6 | Health | 21 |
| Hackney People | 9 | History | 23 |
| Green Matters | 10 | Travel | 25 |
| Young Hackney | 12 | Food | 27 |
| What's On | 15 | Jobs | 28 |

hackneytoday

Editorial: Call Jane Young on: 020 8356 3275, e-mail: htnews@hackney.gov.uk; or write to: The Editor, Communications, 2 Hillman Street, E8 1FB.
Advertising: Call David Roberts on: 020 8356 2416, e-mail: david.roberts@hackney.gov.uk; or call Lee Ray on: 020 8356 3445, e-mail: lee.ray@hackney.gov.uk
Listings: Call Gracia Douglas on: 020 8356 3736, e-mail: whatson@hackney.gov.uk
Distribution: Call Lee Ray on: 020 8356 3445, or e-mail: lee.ray@hackney.gov.uk
Design: Richard Hart and Kate Gibney

Published by LBH Communications on behalf of Hackney Council. The products and services advertised in this newspaper do not carry the endorsement of Hackney Today or Hackney Council.

Getting to grips with Boccia and bringing Paralympic athletes to Hackney

Aim high



Youngsters celebrate their success with Paralympian Ian Rose (right) after taking part in a Boccia tournament



Bowled over

By
Emma Britton



PUPILS from six primaries proved they were on the ball by taking part in a day-long tournament in the Paralympic sport of Boccia – similar to boules.

The group of 80 children were joined by Paralympic athlete Ian Rose, who umpired games, offered

words of encouragement and handed out the awards.

Ian, who won a silver medal for judo at the Athens 2004 Games, said: "I came away from the event inspired because the children taking part really enjoyed themselves and gave it their all.

"They took real pride in representing their schools and being the best they could be. It's not about ability or disability, it's about setting your own goals and achieving them."

The final match of the tournament was between

Jubilee and Millfields Community primary schools, with Jubilee eventually taking the top spot.

“A great example of how young people can learn new skills, compete and have fun”

The other schools who took part were: St John the Baptist Church of England, Whitmore, Nightingale and Tyssen.

Cllr Guy Nicholson, Cabinet Member for Regeneration and the 2012 Olympic and Paralympic Games, said: "One of our key priorities as a host for the 2012 Games is to ensure that young people of all abilities are given the opportunity to become

involved in sports and physical activity.

"This Boccia tournament is a great example of how young people can learn new skills, compete and have fun together."

The contest was organised by community organisation East End SportsAbility, with support from Hackney's School Sport Partnership, the Council and Big Lottery Fund.

First-class venues

HACKNEY could play host to athletes training to take part in the 2012 Paralympic Games.

Clissold Leisure Centre, and Stoke Newington Secondary School will be included in the Official Guide for pre-Games training camps.

The Hackney venues – which join six in the guide for Olympic athletes – offer first-class facilities for goalball, Paralympic judo, sitting volleyball, and wheelchair basketball, fencing, and rugby.

Cllr Nicholson said: "Hosting Paralympians here will be a great inspiration for residents of all ages and abilities.

"We are keen to ensure that being a host borough for 2012 supports potential Paralympic talent, as well as encouraging more people to try a new sport or activity."

He added that Hackney is committed to enabling access and participation for people with disabilities, and that hosting Paralympic training camps will help create even stronger links with the disabled sports community. The guide will be circulated to all National Paralympic Committees, which decide where to base their teams, or send individual athletes, to prepare and acclimatise for London 2012.



Wheelchair basketball players in action

Need a GP?

Trowbridge GP Surgery,
18 Merriam Avenue, Hackney E9 5NE
Tel: 020 8986 7781
www.trowbridgesurgery.co.uk



Come and register today!

Surgery Offers:

- ☑ New Patient Registrations EVERY DAY
- ☑ Patients Welcome from E5 and E9
- ☑ Open on Saturday Mornings
- ☑ Appointments Easily Available
- ☑ Professional and Friendly Staff
- ☑ Same Day Repeat Prescriptions
- ☑ Maximum Quality Scores

Make Use of Our Staff and Services:

- Asthma, Diabetes and BP Clinics
- Health Visitor and Midwife
- Counsellor and Drug Counsellor
- Stop Smoking Clinic
- Minor Operations
- Contraception and Sexual Health

Opening times: 8am to 6.30pm Mon-Wed & Fri, 8am to 3.30pm Thu, 9am to 11.30am Sat



Hackney youngsters get set for the 2012 Games (main picture); The Fosbury Flop in action (top); a US swimmer gets some final advice from her coach (above); advertising from the London 1948 Games (left); and tickets (courtesy of The Museum of London); Gaston Reiff of Belgium (below) who won the 5,000m in 1948; Track & Field Olympic Records, written by Harold Abrahams, 100m winner in 1924, immortalised in the film 'Chariots of Fire'

Mount Olympus to Hackney Wick

By **Gracia Douglas**

YOU can't miss the fact that a big slice of the 2012 Olympic Park is being built in Hackney. But did you know that London has played host to the Games twice before – in 1908 and 1948?

“A great way for residents to find out about the history, tradition, values and ethics of the Olympics”

Spirit Of Sport is a new exhibition at Hackney Museum, that aims to inspire children and families by revealing the colourful history of the Games, from the ancient Olympics, to the birth of the modern day competition in Athens 1,000 years later.

Visitors can see images from the 1908 and 1948 London Games, learn about athletes' stories and the UK origins of the Paralympics. Highlights include footage from the 1948 Games and a mock-up of that era's stadium. Then it's fast forward to 2012.

Cllr Guy Nicholson, Cabinet Member for Regeneration and the 2012 Olympic and Paralympic Games, said: "This

exhibition is a great way for residents to find out more about the history, tradition, values and ethics of the Olympic movement, and to understand what will be happening in Hackney during the summer of 2012 and beyond."

The exhibition also features activities to encourage young people to think about their sporting heroes and Olympic dreams. Plus interactive sports challenges, a wacky 'Olympic machine' by inventor Johnny White, videos about the coming Games made by local schools, and ideas on how to get involved in 2012.

Paralympian and Hackney resident Dervis Konuralp – who is off to the

2008 Beijing Games – is the borough's first Olympic and Paralympic ambassador, visiting schools and events to tell his story.

He said: "Sport is so accessible for children and is a means of achievement for them.

"It has helped me so much and I hope it can do the same for others.

"The 2012 Games can inspire people of all ages and abilities to start getting active now."

MORE INFO

Spirit Of Sports runs from 24 June to 6 September at 1 Reading Lane, E9. Call: 020 8356 3500 or e-mail: hmusuem@hackney.gov.uk



Reading, relaxing or building
a career in construction

THIS
PAGE



Pupils get into the spirit of the exhibition, with some help from their Egyptian-dressed greeters

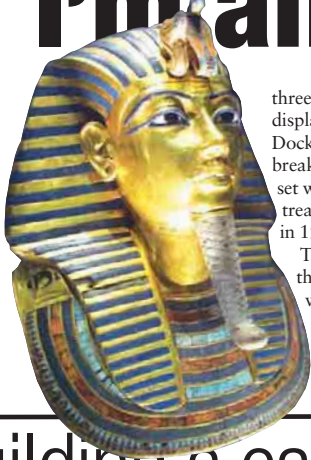
Mummy... I'm afraid

By
Sylvia Arthur

Children from Nightingale Primary School in E5, were treated like royalty when they became the millionth ticket holders to visit the Tutankhamun exhibition at the O2 centre.

A party of Egyptian-dressed greeters gave the 150 students the royal treatment with hand-carried, golden throne rides, enormous plumed fans and an all-round majestic welcome.

The new exhibition of Tutankhamun's treasures has captivated the capital. Since tickets became available, they have sold at a rate of 171 an hour, or



three every minute. The display at The O2 in Docklands is on track to break the previous record set when Tutankhamun's treasures came to the UK in 1972.

They were housed at the British Museum, where they were viewed by more than 1.7 million people.

Trainees are building a career

AFTER a year of hard work, learning and mentoring, 14 trainees have graduated from the Woodberry Works construction centre.

All from Hackney, the graduates celebrated their success at a ceremony on 21 May. With a City and Guilds Level 1 and a Construction Skills Certificate Scheme (CSCS) Card, they are now well placed to apply for jobs.

Trainee Patrick Crawford said: "Woodberry Works is a



Six trainees completed a Women's DIY course in painting and decorating, electrics, plumbing and carpentry. (L to R) Karen Sakuru, Gina O'Regan, Hatice Sokuru, Project Manager Marlene McEachrane, Nike Bey and Sandra Murphy

great opportunity for anyone interested in taking a career in construction seriously. You learn the theory and then straight away, you can practice

what you have learnt in empty flats on the estate."

Woodberry Down Programme Director Robin Smith said: "Woodberry Works is an important part

of the community regeneration of the area.

"This will ensure residents play an active role in the redevelopment of their community."

Cllr Guy Nicholson, Cabinet Member for Regeneration and the 2012 Olympic and Paralympic Games, added: "The Council and its partners are committed to ensuring residents have the best skills to apply for jobs created by the 2012 Games and development schemes."

NEWS IN BRIEF

Take a moment to relax

CARERS who provide unpaid help and look after a friend,



Enjoy the spectacle of Brighton Pavilion

relative or neighbour in Hackney can enjoy day trips to Brighton and a spectacular Royal Horticultural Society garden, as well as Tai Chi and a picnic.

It's all part of Carers' Week, from 9 to 15 June, which this year, has the theme – carers can't afford to be ill.

Closer to home, there will be a tour of Hackney Museum, and information at GP surgeries on services for carers.

Booking ahead is necessary for most events, and a leaflet outlining all the activities and how to take part is available.

For details contact Michelle Ereira on: 020 8356 5054; or e-mail: michelle.ereira@hackney.gov.uk

Bookish beginnings



Danny Wallace with reader Manjit Kaur

WRITER and TV presenter Danny Wallace visited Hackney Museum to congratulate budding readers who completed the Reading Agency's annual Six Book Challenge.

This January, adults learning to read set out to finish six books from a selection of 'quick choice reads'

which included the BBC presenter's own work, 'Danny Wallace and the Centre of the Universe'.

Help was on hand during the challenge from staff at Clapton Library and an English for Speakers of Other Languages (ESOL) tutor from Millfields Community School and Jubilee Primary.

The reading marathon ended in May. To mark Hackney's Adult Learners' Week, and the 2008 National Year of Reading, 28 up-and-coming readers were awarded certificates for successfully completing the challenge.

Danny, who presents Horizon and Test the Nation, said:

"This is a fantastic programme. Well done to everyone. I hope this is the start of a special relationship with books and the library services."

For more information about Hackney Libraries visit: www.hackney.gov.uk/cl-libraries.htm

Travellers' tales

YOUNG people will help celebrate the first Gypsy and Roma Traveller History Month with an evening of entertainment. The event on 17 June at the Round Chapel in Dalston is being staged by youth groups from the London Gypsy and Traveller Unit to celebrate the rich culture and history of their communities.

The groups, funded by Team Hackney, have recently made strides in helping young travellers into work and education. June will also see a series of exhibitions, photographic films and writing at Hackney and Stoke Newington libraries, plus Chats Palace, E9. For details contact: info@lgtu.org.uk; or call: 0208 533 2002.

feature



The cycle route through London Fields is now well used by commuters of all ages and backgrounds

Get on your bike



By Emma Britton



A WHOLE host of events have been organised in Hackney to help residents celebrate national Bike Week from 14 to 22 June.

The Council has joined forces with the London Cycling Campaign to promote bikes as a fun, healthy and eco-friendly form of transport. The week's events – among

hundreds across London – are aimed at everyone from the total novice to the experienced cyclist and include bike maintenance pit stops, a cyclist's breakfast, after work

social, and bike tour of the borough.

Cycling has boomed massively in London in recent years, with 800,000 people regularly riding a bike in the Capital.

And Hackney is leading the way, having been named Best Bike Borough at the London Transport Awards in 2006. The Council's work to improve cycle routes also won it the

Best Cycling Facility category at the London Cycling Awards in 2007.

Cllr Alan Laing, Cabinet Member for Neighbourhoods, said: "Cycling is a great way to keep fit and to do your bit to help make Hackney a greener, cleaner place.

"I would encourage residents to go along to one of the events during Bike Week and to find out about free cycle training."

Bike Week events in Hackney - 14 to 22 June

Workplace Cycle Challenge Till 30 June:

A fun competition that encourages organisations to compete against each other to get the most staff cycling.

You could win £150 of bike shop vouchers just for entering.

Register at: www.tfl.gov.uk/tfl/roadusers/cycling/cyclechallenge

Cyclist Breakfast

18 June, 7-9am – London Fields, E8:

Pick up coffee and croissants, while Dr Bike diagnoses your bike's state of health.

Cycle Pit Stops

17 June, 4-7pm – St Peter's Way, N1 (off Kingsland Road)

19 June, 4-7pm – London Fields, E8: Get geared up for summer as mechanics check and tune your

bike for free. Accessories will be on sale at below trade prices and Council staff will be on hand to provide information about cycling in Hackney.

Commuter Cooldown

19 June, 6-8pm

Corner of Green Lanes and Collins Road, opposite

Clissold Park, N16: Refresh yourself after a hard week's cycling with music, cocktails and pleasant company.

Bike the Bounds

21 June, depart 12.30pm, from Hackney Town Hall, Mare St, E8:

Find out more about your area by taking part in a four to five hour leisure cycle around Hackney and discover the amazing diversity of landscape and streetscape within one of London's greenest boroughs. To register, or for more info, e-mail: oliver@hackney-cyclists.org.uk

MORE INFO

Visit: www.bikeweek.org.uk
To find out more about any of the Hackney events, contact Louisa Clarke on: 020 8356 8189; or: louisa.clarke@hackney.gov.uk



Riding a bike for 20 to 30 minutes three times a week can help maintain fitness and significantly contribute to a longer life expectancy

DID YOU KNOW?



It's as easy as . . .

By **Jane Young**

YOU never forget how to ride a bike. True. But things have changed since I last took to two wheels as a scruffy sixth-form student.

Cycling's got trendy and cyclists have got serious. They now form a campaigning group to be reckoned with and are as assertive on the roads.

To mark national Bike Week we look at how Hackney residents can get on their bikes in a fun and safe way.

As we head towards the summer, more people will be considering abandoning cars or public transport for the freedom of a bike.

The attractions are obvious – no waiting for buses or trains that don't arrive, or are packed with bad-tempered commuters; no getting stuck in traffic jams; free travel.

Plus exercise without paying gym fees; and the feel-good factor of doing your bit to prevent environmental meltdown.

Finally, don't forget that amazing feeling you had as a kid, free-wheeling with a cool breeze on your face and the sun on your back.

So what are the main things that hold people back from taking up cycling?

The cost of a bike, road safety fears and theft are often cited. But all of these worries are relatively easy to overcome with a little research.

MORE INFO

To learn more about cycling visit: www.lcc.org.uk or: www.ctc.org.uk

1: Buying a bike

I'd wanted a bike for ages, but couldn't afford one until I discovered the **Bike To Work** scheme – which Hackney Council is one of a growing number of employers to sign up to. Basically, your employer buys the bike and loans it to back to you. You make a 'salary sacrifice' for its hire over 12 months, and the money is deducted from your gross pay, which means you don't pay tax and NI. At the end of the loan period, the employer sells the bike to you at market value, which after a year should be around five per cent. This means that you can save up to 50 per cent on a new bike and equipment worth a total of £1,000. To see if your employer is part of the scheme, or for more information, call: **01225 448 933**; e-mail: info@cyclescheme.co.uk; or visit: www.cyclescheme.co.uk



2: Choosing a bike



Back in the 70s when I got my first bike, things were much simpler. Bikes had two wheels, three gears and were nearly always made by Raleigh.

Today there is a confusing array of makes and types. Rugged mountain bikes, streamlined racers, hybrid combos of the two, fold-up bikes, recumbent bikes, single speed and fixed wheel bikes without brakes! So what's right for you? Ask the experts. I went to the nearest bike scheme shop to work – **London Fields Cycles (above)** – and told staff what I needed. Something stable to commute to work on, not climb mountains; and light enough to carry up the stairs to my flat. Once I'd worked out my price range, they showed me a selection of bikes which I test-drove round the block. It was obvious which was the best one for me. Job done. And it looked cool.

3: Bike security

Shop staff advised me not to scrimp on security, so I bought a D lock that apparently takes the Fire Brigade half an hour to cut through. The Home Office recommend people buy a certified lock with the Sold Secure branding. See:

www.soldsecure.com

I also invested in fittings for the seat and wheels, installed at the shop, which means you don't have to take the bike apart every time you lock it up. The main thing is to always be security conscious, as police say most thefts are opportunistic. For more info on bike security, visit:

www.crimereduction.homeoffice.gov.uk/vehiclecrime/vehiclecrime063.htm
Nothing is 100 per cent theft proof, so make sure the police can return your bike, if you are unlucky enough to have it stolen. Hackney police recover hundreds of stolen bikes each year (below), but are often unable to trace the owners. However, every bike has a unique frame number that can be registered at: www.immobilise.com



4: Road safety

After a spectacular crash on my first outing, which nearly resulted in both myself and the bike landing in Regent's Canal, I resolved to get insurance and some refresher lessons.

The Council provides two hours of free cycle training for anyone aged over 11, who lives, works, or studies in the borough, through a partnership of five organisations led by STA Bikes. As well as teaching adults, they run courses in schools and a Saturday Family Club.

I met instructor **Eric Gauster (above)** from Cycle Training UK (CTUK) in Victoria Park, so he could check my bike was roadworthy and observe my skills in an off-road area. We talked about when I felt uncomfortable on the roads and headed out to some quiet side streets to practice. We went through how to approach T-junctions, traffic lights, and right-hand turns. After two hours I felt safer and more confident in traffic. CTUK has training that can benefit anyone from a beginner to the experienced cyclist. Call: **020 7231 6005**, or visit:

www.cycletraining.co.uk
For training for children call: **020 8802 6013** or e-mail: sally.haywill@stabikes.org.uk

5: Onward and upward...

When you start cycling, you'll find that journeys (under five miles) are often quicker by bike. You also feel fitter and more alert.

And once you've got the cycling bug, there's so much more to discover from the quickest route to work, to day trips along the Lee Valley.

The London Cycle Campaign (LCC) and Transport for London (TfL) have produced a set of maps that cover the whole capital. Order them from:

www.tfl.gov.uk/tfl/roadusers/cycling/cycleroutes/default.asp

Although you don't need any specialist gear to start cycling, there's websites for all the myriad different clothes and kit cyclists invest in to brave the ever-changeable British weather, including ones for fashion-conscious ladies, see:

www.cyclechic.co.uk
You can sign up to bike maintenance courses and cycle clubs.

For team players, there's even bike polo in Brick Lane on Sundays and a bike film festival that tours the world, stopping off in London:

www.bicyclefilmfestival.com

A model struts her stuff at Hackney's **Wheels & Heels** event for fashion-conscious cyclists



LoveLIFE SKILLS

Take charge of your life! Attend one of our unique courses launching in July 2008 and learn how to:

Courses only £39 per person

Saturday 12 July '08
Assemble flat packs
10am-1.30pm

Saturday 12 Jul '08
Manage your personal finances
2pm-5.30pm

Saturday 19 July '08
Plan a Wedding
10am-1.30pm

Saturday 19 July '08
Choose and apply makeup for day and night
2pm-5.30pm

To book your place and/or to get more information
Call : 0870 803 2733 • 07964 186 334
Email: info@lovelifeskills.co.uk
Visit: www.lovelifeskills.co.uk

Venue: Accelerator Shoreditch building
Address: 35 Kingsland Road, Hackney, E2 8AA
Venue Tel: 020 7749 4830
Nearest tube station: Old Street
Buses: 149, 242, 67, 243, 47, 48, 55, 26 & 35



Supported By:
Accelerator
London's 24 Hour Skills University

Save £5 when you book online at www.lovelifeskills.co.uk by 30th June '08 • More courses coming in September '08

2008

A free floral and environmental competition giving you the opportunity to show off your gardening skills

Hackney in BLOOM



Prizes will be awarded for
Best Container Garden
Best Educational Garden

Best Business Premises
Best Pub & Restaurant
Best Residential Garden

Best Front Garden
Best Community Garden
Best Public Parks & Open Space



Sponsored by



Entry Form

All entries must be received by
Friday 20 June 2008.
Please send entries to: Hilary Fairman, London Borough of Hackney,
Maurice Bishop House, 17 Reading Lane, London E8 1HH
Fax: 020 8356 7515
Tel: 020 8356 8429

I wish to enter:

- Best Container Garden
- Best Educational Garden
- Best Business Premises
- Best Pub & Restaurant
- Best Residential Garden
- Best Front Garden
- Best Community Garden
- Best Public Park & Open Space

*Name _____
 *School/organisation (if applicable) _____
 Address: _____

 Postcode: _____
 Telephone: _____
 Fax: _____
 Email: _____

*If you are awarded a certificate, this is the name (or the name of your school or organisation) that will appear on it.

Signature: _____

 Date: _____



Hackney is one of the most diverse places in the UK. In this regular feature, we profile the borough's great & good or just plain interesting

hackneypeople

A sweet taste of success

By
Kate Gibney



HOMEGROWN honey producers Philip Schild, 15, and his stepfather Ian Davies have good reason to be proud of themselves.

In a recent blind tasting at Broadway Market, their Hackney Rooftop Honey proved a match for that of TV chef and organic campaigner, Hugh Fearnley Whittingstall.

In the past, the pair have even turned down offers from two exclusive London food retailers, preferring to sell their produce locally.

“A lot of it is down to Victoria Park and London Fields. But I've seen them in St Thomas's Square on a sunny Sunday”

Ian came to Hackney eight years ago to be with Philip's mum. He had kept bees in Essex, and Philip – who was fascinated by insects – was keen to give it a try.

“I thought he would get stung and then not want to do it, so I discouraged him,” explained Ian.

“Then we heard a radio programme about people who were keeping bees near Tower Bridge and my arguments were defeated.

“He's been enjoying it ever since.”

After starting six years ago with just one hive, the pair now have eight, producing up to 225kg of honey a year.

The bees, which live on the roof of their owners' Tudor Road home, thrive in Hackney. “They love it.” said Ian. “A lot of it is down to the two big parks, Victoria Park and London Fields. But I've even seen them in St Thomas's Square on a glorious sunny Sunday.

“The Council plants things all about, and it all helps give urban bees' honey its diversity and flavour.”

The plight of the honey bee is currently a hot topic, following reports of Colony Collapse Disorder, a phenomenon that has seen millions of bees disappear worldwide.

Worrying indeed, if Einstein's belief – that human life will be gone from Earth within four years if honey bees die out – holds water. The rooftop producers are divided. Philip believes other insects would simply evolve to pollinate plants; while Ian suspects the pronouncements of a man who has been proved right many times before are worth considering.

For Ian, the jury is still out on the cause of this bee malady, which has so far not affected Hackney, but he is quietly confident about their hives.

“We have quite a lot of natural British bees and hybrids in our hives,” he said. “Which are harder



Philip keeps an eye on his rooftop hives (above); Ian in full kit with a tray of bees (below)

Curriculum Vitae Ian Davies & Philip Schild

- 1993** Philip born in Hackney
- 2001** Ian moves to Hackney from Essex
- 2002** The pair start beekeeping with a single hive on their roof
- 2003** The company starts selling its honey through butcher Henry Tidman, who supplies their meat
- 2008** Their honey beats that of TV chef, Hugh Fearnley Whittingstall in a blind tasting at Broadway Market – shown on Channel 4's River Cottage

than the more common Italian bees you find elsewhere.”

So, what is the key to a happy hive? Ian said: “It's really about responsible beekeeping. People think they can do it, get stung, then give up and neglect their hives, which become diseased.”

Anyone determined to keep bees should join an association; and for Hackney enthusiasts, Ian has an idea. “If there was someone who was really dedicated to learning, they

would be welcome to come to the hives over the summer to get the skills they need,” he said.

MORE INFO

Genuinely interested in bees? Contact **Hackney Today**, and we will pass your details on to Ian. Visit the London Beekeepers Association at: www.lbka.org.uk To get Hackney Rooftop Honey head to **Broadway Market, E8**; or visit: www.broadwaymarket.co.uk



Images by Gabrielle Motola: www.gabriellemotola.com/motola/

greenmatters



THE GREEN GENIE

All your recycling questions answered

Q: Why can't I put meat and fish bones into my Blue Bin kitchen waste recycling bin?



A: Meat and fish bones are not accepted in the Blue Bin kitchen waste scheme because they don't break down in the composting process and can contaminate the recycling. Food waste collected from the Blue Bin scheme is taken to London Waste Ltd, in Edmonton, where it goes through an in-vessel composting process. The compost is then used back on Hackney's green parks and spaces.

For more info visit:
www.londonwaste.co.uk



MORE INFO

To ask the Genie a question e-mail: recycling@hackney.gov.uk; or write to: Recycling, 2nd Floor, 263 Mare Street, E8 3HT. For more information on recycling call: 020 8356 6688; or visit: www.hackney.gov.uk/recycling



In the trials, residents were supplied with a roll of 26 orange sacks, and a weekly door-to-door collection

Other trials used a green heavy duty bag, collected weekly by the Council's recycling crews

Latest on estates recycling

The Council is investing in recycling on estates and residents should see a 20 per cent increase in banks over the coming months

By Annie Gilbert



RECYCLING on estates is changing as the Council investigates the best way to help high rise residents do their bit for the environment.

Currently, the majority of estates are served by strategically located recycling banks.

Last year however, the Council began trials of different types of collection schemes for estates.

Hackney was one of the few local authorities in the country to test the effectiveness of door-to-door collections on estates.

Residents on estates play an important part in helping Hackney to recycle as much as we can



The results of these trials are now being analysed to work out which method should be rolled out across the borough.

Door-to-door collections for high-rises have already been ruled out however, following objections from the London Fire Brigade (LFB).

It raised concerns that recyclable materials left in corridors could affect fire escape routes and posed a fire risk. These fears were later confirmed by independent fire safety consultants.

Other local authorities across London are now also in the process of stopping collections from high rise buildings as a result of this advice.

The good news however, is that people living in some street level properties in estates can get a recycling

Green Box and Blue Bin food waste collection from their front door.

Cllr Alan Laing, Cabinet Member for Neighbourhoods, said: "It's unfortunate we need to stop door to door collections for high rise blocks. However we are rolling out the Green Box and Blue Bin collections where we can for street level homes.

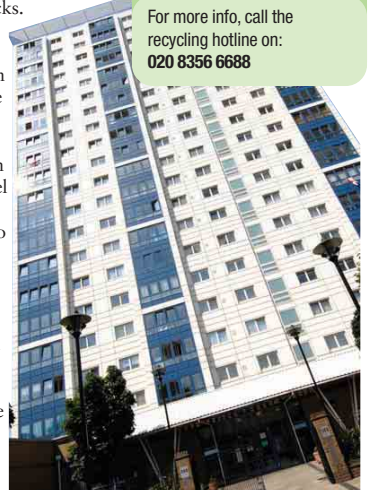
"We've also responded to requests for plastics and cardboard recycling and are working towards increasing the number of recycling

banks on estates by 20 per cent."

He added: "Estates with little recycling provision will be prioritised in the roll out."

MORE INFO

For more info, call the recycling hotline on: 020 8356 6688



To order your Green Box, e-mail:
recycling@hackney.gov.uk



Carbon crackdown

By James Willsher

HACKNEY is leading the way in environmental sustainability by being the first London council to take part in a national carbon trading pilot scheme.

It works by issuing participants with a virtual



All paper used at the Council is 100 per cent recycled and unbleached

carbon budget, based on expected annual levels of emissions and agreed reduction targets.

Councils can then trade carbon at a price set by supply and demand, in order to stay in budget and meet those targets, although no real money changes hands. Instead, authorities buy and sell permits in a virtual marketplace.

The scheme – called Carbon Trading Councils – has been introduced ahead of 2010 when the Government's Carbon Reduction Commitment comes into effect.

It's all part of Hackney's commitment to reducing carbon emissions, which has seen the introduction of innovative measures

including compulsory recycling; engine size-based parking permits; and the greenest refuse collection fleet in the country.

Cllr Sophie Linden, Cabinet Adviser for Environmental Sustainability, said: "Reducing how much energy we consume will not only make a difference for the future, but can also help residents and businesses to save money."

Hackney is also participating in the Carbon Trust's Local Authorities Carbon



Mayor Jules Pipe and Chief Executive Tim Shields (above) sign the Nottingham Declaration; one of Hackney's green cleaning machine (left)



Management Programme, which provides technical and management support on reducing carbon emissions.

This January, Hackney signed the Nottingham Declaration, a pledge to work with residents, businesses and other organisations to cut emissions.

The Council scooped a prestigious Mayor of London's Green Procurement Code Awards last October, for measures including using solar-powered pay-and-display machines, fuelling the refuse collection fleet with Biodiesel blend, and buying 100 per cent recycled, unbleached paper.



Order your Green Box net today

To order your net, phone the recycling hotline on 020 8356 6688, email recycling@hackney.gov.uk or fill in the tear off slip and post it back.

Please send me a free net for my Green Box

Name _____
 Address 1 _____
 Address 2 _____
 Postcode _____

Place this form in an envelope, and send to: 'Green Box net', 263 Mare Street, London E8 3HT

NO STAMP REQUIRED

Privacy statement: Your personal data will be processed in accordance with the Data Protection Act 1998



www.kipmcgrathhackney.co.uk 



Do you really want the best for your child?

Professional tutoring for your child

- Fully qualified teachers
- Ages 6-16

Reading
 Spelling
 Maths
 English
 11+
 SATS
 GCSE

We can help your child succeed

Tutoring that works

- A personal study programme
- Exclusive and proven educational methods and resources
- Safe and focused learning environment
- Fully qualified teachers
- Weekly sessions
- Homework set and marked
- Parental feedback

Call NOW for your FREE assessment on 020 7241 3339

Kip McGrath Education Centre, 16-18 Ada Street, off Broadway Market, London Fields, Hackney, E8 4QU
www.kipmcgrathhackney.co.uk




Public Notice

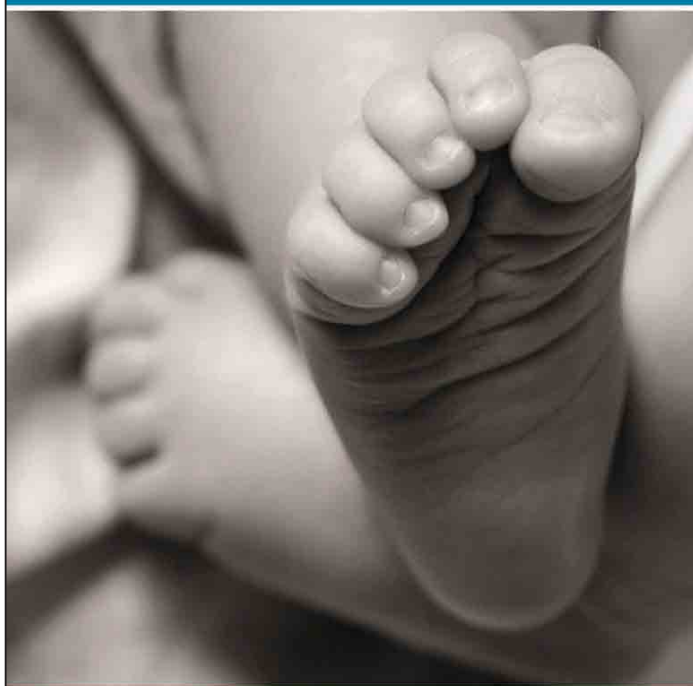
Hackney Council's Building Control service would like to announce an increase in building regulation fees.

Changes can be viewed online at www.hackney.gov.uk/building-control

We are happy to discuss these changes and provide further information. Please email us at info@hackney.gov.uk or call Building Control Manager, **Tony Ojedele** on 020 8356 8124 or 8125 for more details.



You can now register your baby at Woodberry Down Children's Centre



If you live in Stoke Newington and Stamford Hill area and your baby is less than 3 months old, you are eligible for this new service.

Registrations take place on Thursdays between 10am – 1pm and 2pm – 3.30pm. You do not need an appointment, but if you would like to find out the best time to visit please contact the reception desk on 020 8815 3250.

The registrar will ask for a number of details and it is important all information recorded in the register is correct.

To find out what details you will be asked for, and documents you will need to take with you, contact the Hackney Register Office on 020 8356 3000. You can also download the information online at www.hackney.gov.uk.

Woodberry Down Children's Centre,
Lilliput Building, Spring Park Drive, Green Lanes, N4 2NP 020 8815 3250
Hackney Register Office, Town Hall, Mare Street, E8 1EA 020 8356 3000





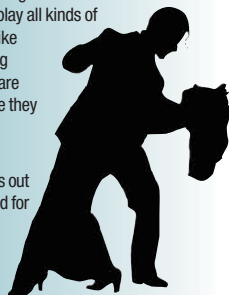
Be prepared for Gayhurst

Unfortunately I don't go to any of the schools that won, but my school is brilliant, very creative and I think it should have won and here's why: (I have picked four reasons because I don't like odd numbers).

1. Lots and lots of people come to our school to run workshops with us
2. Our teachers think of fun and unusual trips to go on, like visiting the House of Lords
3. At school we play all kinds of unusual sports like ballroom dancing
4. The teachers are unusual because they have funny personalities!

For all you judges out there be prepared for Gayhurst Community School!

By Ziyad, 10



Ola and Ziyad (left) think their schools deserve praise; Nyasha (below) attends one of the schools singled out as a School of Creativity

Time to celebrate our creative schools



By Nyasha, 14, Ziyad, 10, and Ola, 12

LAST year a report from MPs said that creativity in schools 'should be taken far more seriously'.

A few months on and three Hackney schools have been named among England's 30 Schools of Creativity – Jubilee Primary

in Stoke Newington; Lauriston Primary, E9; and Stoke Newington Media, Arts and Science College.

Here Headliners journalists report from one of the winning schools and others (they think) should have won.

Learning fun at Shacklewell

It's good that some schools in Hackney won. This shows that it is not a bad place to go to school. Creativity in schools helps children because it makes learning more fun so they take in a lot more information. Being creative can help later on in life because being creative helps you think differently. I went to Shacklewell Primary School which was quite creative. It ensured that children felt as though their work was good. Everywhere in the school there was a piece of students' work hung on the wall.

We also did peer learning which is good because you have other minds which can be put together and when you come together you can think up something great. We also had a school council so you could tell them what you would like improved or changed. It was children representing children.

By Ola, 12

Hooray Stokoy

My school is very creative and offers a lot of opportunities to get your creative juices bubbling. It has great facilities including:

1. A recording studio
 2. Six computer rooms and a media suite
 3. After school clubs involving media – where you can make your own movies
 4. A music block with practice rooms
 5. A drama block and dance studio to see our performances before we perform.
- I think more schools need to offer creative activities and allow students to make their own choices about what they would like to do. They should also offer opportunities to showcase their talents, like at Stoke Newington School, where we have an assembly at the end of every term where singers, poets, rappers and bands perform in front of the whole school.

Overall I think my school deserved to win! Hooray Stokoy School!

By Nyasha, 14

hackneytoday

To place your advertisement in Hackney Today

Call David Roberts on 020 8356 2416; david.roberts@hackney.gov.uk;

or Lee Ray on 020 8356 3445; lee.ray@hackney.gov.uk

YOUR BUSINESS ADVERT HERE

YOUR BUSINESS ADVERT HERE



CIRCULATED TO 108,000 HOMES & BUSINESS IN HACKNEY

Choose and Move

A PRIVATE RENTED SCHEME FOR OVER-CROWDED TENANTS

- Are you a Hackney Homes or Housing Association tenant registered on the Council's waiting/transfer list and resident in Hackney?
- Have you been assessed by the Council as overcrowded and lacking at least two bedrooms?
- Are you currently placed in the priority band and willing to move?
- Would you be interested in moving into a property suitable for your families needs in the private rented sector?

If you have answered yes to all the above questions, then this is the scheme for you.

What's in it for you?

- payment of up to £6,000 to assist with the cost of moving and the rent
- A dedicated officer to help you find a suitable property and assist you every step of the way
- A list of private landlords in all areas
- **Scheme now extended to include Private Tenants and families needing at least two further bedrooms**

WE HAVE LIMITED FUNDS FOR THIS SCHEME AND ACCEPTANCE WILL BE ON A FIRST COME FIRST SERVED BASIS.

For further information please contact the Mobility team on:

Tel: 020 8356 5823 or 020 8356 2976



what's on

TOP FIVE

There's so much to do in and around Hackney. From theatre to club nights, art exhibitions to community events. Here's our pick of what's on this fortnight:

FAN FAIR

Transition Gallery presents a group of artists whose work deals with the spectacle of seaside sensation

▶ See Arts

HIP HOP DANCE

Learn a funk dance routine while aerobically enhancing yourself.

▶ See Courses

BREAK DANCING

An open class where ages eight to 58 can learn basic techniques

▶ See Health and Fitness

JAZZ ON A MIDSUMMER'S NIGHT

Chats Palace presents a local musician-led set of soul, gospel and blues

▶ See Nightlife

CHESS CLUB

After a successful season, Hackney's team are welcoming new players to their ranks

▶ See Sport

ARTS

CINEMA

COURSES

HEALTH & FITNESS

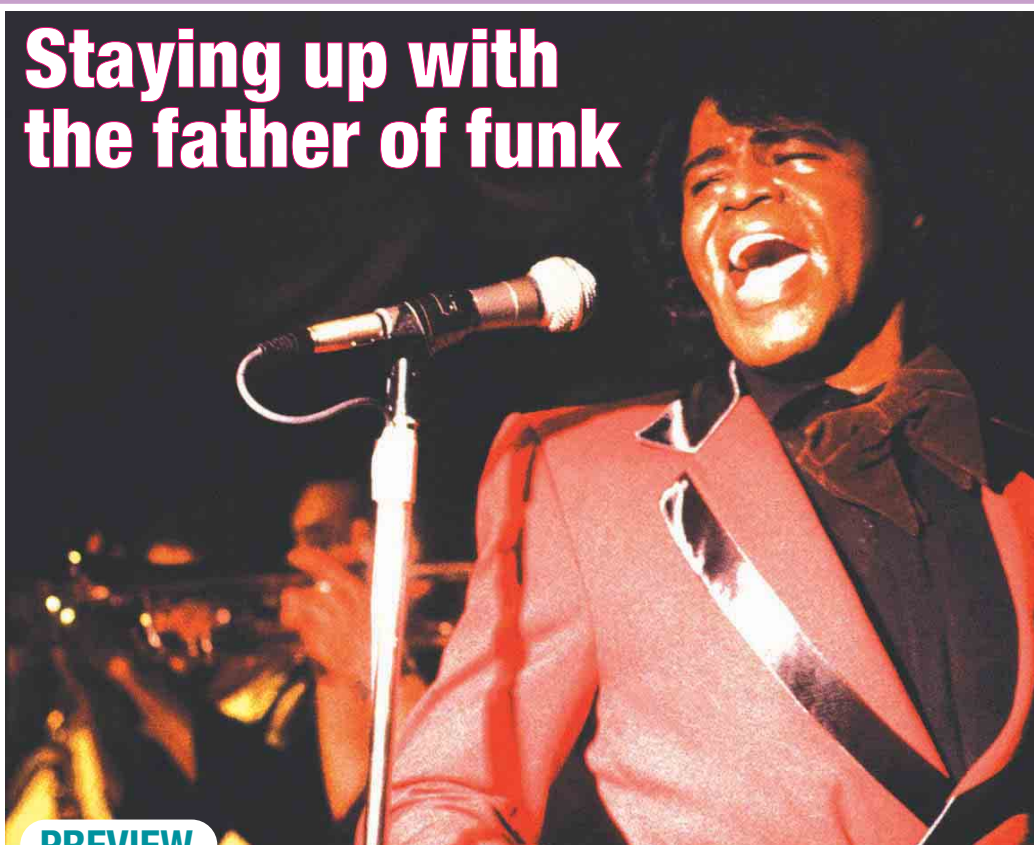
NIGHTLIFE

SPORT

THEATRE

NOTICEBOARD

Staying up with the father of funk



PREVIEW

TRIBUTES to James Brown provide the soundtrack for an eclectic evening with music, film, and a free club stage – all under one roof at the Barbican Centre, EC2

Still Black Still Proud - A James Brown Tribute

Barbican Hall, 8pm
This African tribute to the late great James Brown is led by saxophonist **Pee Wee Ellis**, whose playing on Brown's hits like Cold Sweat led to his moniker 'the architect of funk'. He brings together trombonist and long-time Brown sideman **Fred Wesley**, Senegalese singer **Cheikh Lô**, Afro-beat legend **Tony Allen**, South African vocal sensation **Simphiwe Dana**,

British/Nigerian rapper **Ty** and Malian blues guitarist **Vieux Farka Touré** for a celebration of soul.

Hear your favourite James Brown hits I Feel Good, Funky Good Time, Say it Loud, Cold Sweat and many more. **Tickets £15/£20/£25**

Film Event, 5pm, Cinema 3
James Brown: Soul Survivor (15): Jeremy Marre's sensational chronicle of the life and times of the great James Brown. Featuring

performances, interviews and hits It's a Man's World, Say It Loud and many more. **Tickets £8.50 /£6 members, concs & concert ticket holders**

Freestage, from 6pm
Yaaba Funk
This ten-piece Hi-Life/Afro-Funk explosion is product of Brixton and influenced by 1970s Ghanaian hi-life. They offer their take on the funky work of James Brown; as well as UK sounds like Roots Manuva and The Specials.

A floor-filling extravaganza combining the tightest rhythm section this side of Accra, fat analogue basslines, blazing horns, and gritty rock guitars. **Free**

Clubstage directly after the concert, Where Have All The Panthers Gone? Plus DJs Max Reinhardt & Rita Ray
A musical, visual and spoken word elegy to a movement that seems to have disappeared. With the Shrine Synchronsystem, Byron Wallen & Roger Robinson. **Free**

also in what's on



NIGHTLIFE



HEALTH & FITNESS

CREATE 08 - LIFT FESTIVAL 2008

12-21 June, 8am-midnight.
International events made for and with London's communities. Performances, exhibitions, workshops, debates and screenings, exploring themes such as climate change, migration and identity. Free/£2-4. Stratford Park, Theatre Royal Stratford East, Stratford Circus, E15. Info: 020 7490 3964





RIVINGTON GALLERY
Wed-Sun, 12-28 June, 12-5pm. A dérive is an aimless walk with purpose; a look at reclaiming individual autonomy from the spectacle of an inverted society and more. A group exhibition. Free.
Info: alastair_lawrie@yahoo.com

BEYOND THE PALE YELLOW AMUSEMENT PARK
Until 29 June, Thurs-Sun, 12-6pm, or by appointment. A group exhibition of objects, installation, photography, and video, relating to past and future performance works or actions. 27 Belfast road, N16.
More info: 020 8806 0817; info@campbellworks.org; www.campbellworks.org

WOMAN
Until 30 June, 9.30am-11pm. Series of wall-mounted sculptures and drawings celebrate womanhood and reflect ruefully on the various persecutions of women in both the pre and post-feminist West. Free. Macondo café bar gallery, Hoxton Square, N1.

More info: 020 77291119; montsepintora@googlemail.com; www.macondo.co.uk

FAN FAIR – TRANSITION GALLERY
Fri-Sun, 14 June-13 July, 12-6pm. Fan Fair rolls out a group of artists whose work deals with the spectacle of seaside sensations. Based not at the seaside, but in the heart of Hackney. Transition gallery, Unit 25a Regent Studios, 8 Andrews Road, E8.
More info: 020 7254 4202; www.transitiongallery.co.uk

SPACE
12 June-26 July. London's first and largest studio provider celebrates its 40th birthday, hosting an exhibition celebrating the cultural vibrancy of East London. The exhibition will contain work from Turner prize winner Mark Wallinger. 129 Mare St, E8.
More info: 020 8525 4346;



Fan Fair at Transitions Gallery

mat@spacestudios.org.uk; www.spacestudios.org.uk

HACKNEY IMPACT ARTS ACADEMY
From 4-15 Aug. Love dance, music or film? Then sign up to this free summer programme for 13-19 yrs. MTR Studio 23, 23 Charlotte Road, EC2.
Info: 020 7729 2323; mouthisroars@btconnect.com

A CENTURY OF OLYMPIC POSTERS
Until 7 Sept, 10am-12pm. The first exhibition in the UK to bring together a large range of Olympic posters from the 1900 Paris Games to the present day. V&A Museum of Childhood, Cambridge Heath Road, E2.
Info: 020 8983 520



RIO CINEMA
 Mongol (15); The 39 Steps (U); In Search of a Midnight kiss (15); My brother is an only child (15); The Edge of Love (15); La Scala Opera Series: Il Trittico. 107 Kingsland High St. E8.
Info: 020 7241 9410; www.riocinema.org.uk



Prince Caspian

STRATFORD EAST PICTUREHOUSE
 Indiana Jones and the Kingdom of the Crystal Skull (12a); Sex And The City (15); Superhero movie (12A); Tenpercent (12A); Calamity Jane – Reminiscence screening (U). Salway Rd, E15.
More releases/info: 0871 704 2066; www.picturehouses.co.uk

CINeworld WOOD GREEN
 Indiana Jones and the Kingdom of the Crystal Skull (12a); Sex And The City: the movie (15); Gone Baby Gone (15); Harold and Kumar escape from Guantanamo Bay (18); Juno (12A); Prom night (15). Wood Green Shopping City, off Noel Park Rd, N22.
More releases/adv bookings: 0871 200 2000. **Info:** 0870 162 8960 www.cineworld.co.uk

ODEON LEE VALLEY
 Superhero Movie(12A); Prom Night (15); Gone, Baby, Gone (15); Sarkar Raj (tbc); Mongol (15); Chronicles of Narnia: Prince Caspian (tbc). Lee Valley Leisure Complex, Picketts Lock Lane, Edmonton, N9. **More releases:** 0871 22 44 007. **Info:** www.odeon.co.uk

VUE CINEMA ISLINGTON
 Happy-Go-Lucky (15); In Bruges (18); Iron Man (12A); Mongol: The Rise to Power of Genghis Khan (15); What Happens In Vegas (12A). 36 Parkfield St, Islington, N1. **More releases/info:** 08712 240 240; www.myvue.com



HISTORY ON THE STREETS: EXPLORING LONDON'S PAST
14 June, 10am-4pm. History takes to the streets of London with a free day of walks hosted by Birbeck, University of London. A choice of five different focus walks, including 'An intro to Roman London', and 'London Queer Lives'. Free. Booking essential. **Info:** Tim Russell; t.russell@bbk.ac.uk – with subject line 'Life on the streets'.

HIP HOP DANCE
Every Tues, 6-7pm. Hip Hop dance, and learn a funky dance routine, aerobically enhancing yourself. All levels welcome inc beginners. £6 for the hour. 12yrs+ / adults. Chats Palace Arts Centre. 42-44 Brooksby's Walk, E9. **Info:** 07903843272; alysteele@hotmail.co.uk www.streetbeatuk.com

hackney.gov.uk
SCI FI READING GROUP
Third Tues, 2.15-3pm, 6.30-7.30pm. Enjoy science fiction and fantasy books, or would you like to read them? Come along to this reading group. CLR James Library, 24 Dalston Lane, E8. **Info:** readsciencefiction@Hackney.gov.uk

NEWINGTON DANCE SPACE
Every Wed, 2.15-3pm. Parent & baby creative dance, for tots (3 mths to crawling) with a parent/carer, £5. Every Thurs, 11am-12pm. Parent & toddler creative dance, for 2-4yrs with a parent/carer. £5.50. 1D Shelford Place (off Stoke Newington Church St), N16.
Info: 07884 104 681; louiseklarnett@hotmail.com

INTRODUCTION TO BALLROOM & ARGENTINE TANGO/LATIN DANCE
Every Wed, 3-5pm. Ballroom and Argentine Tango. **Every Fri, 3-5pm.** Latin dance. Over 50s especially welcome. Lordship South TA, Community Centre, 14 Lordship Grove N16. **Info:** 07962 318 844

ART CLASS
Every Wed. Weekly art classes for 4-7yrs (4-5pm) and 8-12yrs (5.15-6.15pm). Includes mosaic, mobile, portrait and mask making. 5 week course; first week free, £8 thereafter with all materials included. Buggies and Bikes, 23 Broadway Market, E8. **Info:** 07715 122 194; 194/katlemkus@yahoo.co.uk

FREE MUSIC WORKSHOPS
Every Thurs, 4.30-6.30pm. For teenagers with special learning needs. Downstairs music studio, Hoxton Hall, 130 Hoxton St, N1. **Info/registration:** Kimnara Music 020 8985 8090; kinnaramusic@yahoo.co.uk



YOGA CLASSES
Every Mon 6.45-8.15pm. Shape up and chill out developing inner strength, flexibility and calm with Hatha yoga. £8 drop in or £36 for a 6 week course. The Nightingale

Competition

Win tickets to The 291 Show at the Hackney Empire

WIN! Testing the talent

JOIN Dibbi, your delightful Bajan Dance-Hall Queen at the Hackney Empire and kick-start your summer weekends at The 291 Show, London's liveliest variety show. Each week, Musical Director, Delroy Murray introduces rising stars performing in the legendary 291 showcase. Singing our favourite songs in their own unique styles, live in concert with Delroy's full-size R'n'B house band. The top act from each week goes through to the Grand Finale and the Season's No.1 Act wins a holiday to Barbados. Join Delroy and Dibbi each week and enjoy the shining variety of the funkiest street dance, cutting edge comedy, lyrical poets and MCees and 291's off-the wall game show. Plus the most exciting live singers' showcase, providing an industry standard platform for top flight unsigned vocal entertainers. The shows are every Friday from 20 June to 18 July at 8m. Tickets £14.50, 12.50 Grand Final £17.50 Stalls and Dress,

£15.50 Upper Circle. Concs £2 off, £3 off top price for Friends. Box Office: 020 8985 2424; www.hackneyempire.co.uk

Hackney Today has three pairs of tickets to see the 291 show on 20 June to give away. Just send your name, address and phone number to: 291 Show competition, Hackney Today, Communications, 2 Hillman Street, E8 1FB; or e-mail: lee.ray@hackney.gov.uk by 12 noon on 16 June. Winners will be picked out of a hat.



GP practice, 10 Kenninghall road, E5. **Info/booking: 020 8986 7777;** info@thehealingtent.co.uk; www.thehealingtent.co.uk/classes-yoga.php

LOW COST MASSAGE FOR OVER 55s

Every Tues, 1.30pm. Relaxing massage for people over 55. £12. Hoxton Health, St Leonards, Nuttall St, N1. Info or to book: Maggie: **020 7739 2533.**

Six-week summer shape-up challenge

Guaranteed weight-loss plan which includes:

- 6 week personal-training programme
 - Initial consultation
 - Nutritional coaching
 - Support & guidance to help you achieve your goals
 - Safe, long-lasting results
- All for only £495 (places are limited)

Call Kate on: **07908640108**; e-mail: info@blueearthpilates.com or visit: www.blueearthpilates.com for further details

SHAPE IT UP

Every Tues, 7.30pm. Caribbean Soca Dance Fitness. Effective dance fitness techniques. Old Fire Station, Stoke Newington. £5 per session; second class free. **Info: Maria: 07932 362 627;** socadancefitness@hotmail.co.uk; www.myspace.com/socadancefitness

YOGA CLASS

Every Wed, 12-1pm. Led by experienced, Yoga for Health Foundation qualified instructor. All levels and abilities welcome. £10 for 5 weeks. Sir Thomas Abney Primary School, Fairholt Rd, N16.

SHOTOKAN KARATE

Every Wed, 6-7pm. Adults £7. Children £5.50. Kings Hall Leisure Centre, 39 Lower Clapton Road, E5. **Info: 07957 630 463;** www.sobellkarate.com

ULTIMATE FITNESS

Every Wed, 6-7pm: legs, tums & bums; **7-8pm:** aerobics. **Sat, 10-11am:** aerobics; **11am-12pm:** circuits. All levels welcome. £2.50 a

class; £10 for five classes. Hackney Free & Parochial School, Paragon Rd, E9. **Info: Tony Cartwright 020 8985 2430 x125**

BREAKDANCING

Every Fri, 8-9.30pm. An open class in breakin' for all ages from 8-58! Participants will learn the basics in technique, style, conditioning and musicality, and learn to create their own moves. Friendly atmosphere and the first class is free. £8. Easy Studio, 60-64 Kingsland Road, E2. **Info: 020 7033 4660**

OVER FIFTIES DANCING SOCIAL GROUP

Fri 13, 20, & 27 June, 6-10.30pm. Reggae and Soca Music, £5. St. Paul's Church Hall, Stoke Newington High Road, N16. **Info: 07778 680 069**



THEATRE ROYAL STRATFORD EAST BAR

11 June, 6-9pm. Faye Patton, female vocalist and blues piano. Free. Gerry Raffles Square, E15. **Info: 020 8279 1160;** <http://www.stratfordeast.com/music.php>

CARGO

12 June, 6pm-1am. Euro2008 Polish special; adopting Poland as their Home team. Austria vs Poland will be showing, followed by Tomasz Lipinski and Til Tilers. Free. 83 Rivington St, EC2. **Info: 020 7749 7840;** www.cargo-london.com

THE VORTEX

13 June, 8.45pm. Finn Peters Finntet is one of the UK's top innovators on both saxophone and flute, and will play material from the new album 'Butterflies' focussing on strong melodies, and intelligent harmonic

interplays. £10. The Vortex Jazz Club, 11 Gillett St, N16.

Bookings: www.wegotickets.com/event/28649; Info: 020 7254 4097; www.vortexjazz.co.uk

BARDENS BOUDOIR

14 June, 8pm-2am. Club Motherf***r. Kid Acne, Sheffield's very own Beastie Boy and modern day Renaissance man.

Internationally acclaimed artist having created his own comic book, designed record sleeves, and a T-shirt range for Prada, and exhibited in galleries throughout the world. £4 before 9pm. 36-44 Stoke Newington Road, N16. **Info: 020 7249 9557**

HERBAL

20 Jun, 9-3am. Dynamic Audio vs Propaganda Records. Drum 'n' bass, dub, jungle and old skool. £8 before 11pm. 10-14 Kingsland Rd, E2.

Info: 020 7613 4462; or www.herbaluk.com; www.myspace.com/generationdub

CHATS PALACE

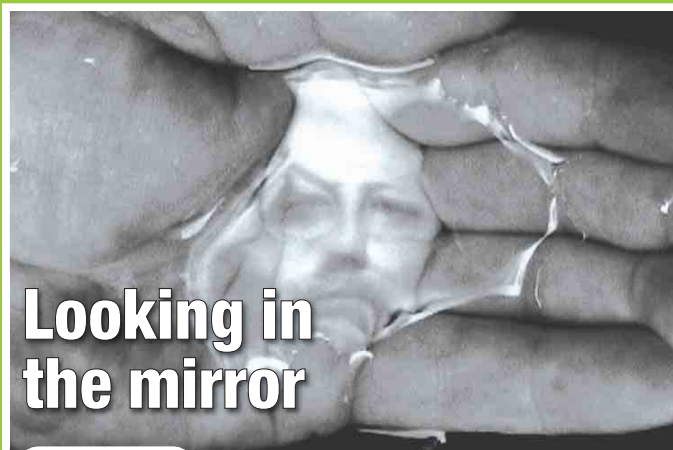
21 June, doors 7.30pm first set 8.45pm. Jazz On A Midsummer's Night, local musician led organisation with charismatic vocalist and pianist Laka D, and others, for a set of soul, gospel and blues inspired songs. £10. Chats Palace, 42-44 Brooksby's Walk, E9. **Info: 020 8533 0227;** www.wegotickets.com/event/t/31018; info@chatspalace.com

THE COMEDY CAFE

Every Wed, from 7pm: new act night, free. **Thurs, from 7pm:** top comics, £8. **Fri, from 6pm:** top comics, £5. **Sat, from 6pm:** party night, dancing 'til 1am, £15. 66/68 Rivington St, EC2. **Info: 020 7739 5706;** www.comedycafe.co.uk

THE OLDE PECULIAR

Every Sun, 7pm. Electric recovery session, playing classic rock, country, heavy metal, synth rock, ambient, post punk. The Mucky Pup, 39 Queen's Head St (off Essex Rd), N1. **Info: 020 7226 2572;** www.myspace.com/theoldepeculiar



PREVIEW

Linea del destino (Line of Destiny), 2006

By Paul Knipe

Rivington Place, Shoreditch

13 June - 27 July Colombian-based artist Oscar Muñoz has been making conceptual photographic works for the last 10 years. In his pieces he explores themes of identity, memory, and human loss; often portrayed as transitory, fleeting moments. The internationally acclaimed artist uses modern photo and film

techniques to capture this. In Lineo del destino we are presented with the vision of a face - perhaps a reflection - in water held in hands. It is a temporary vision soon to disappear. In Proyecto para un memorial Muñoz draws portraits on a hot pavement. As one nears completion it evaporates, and he starts again. The themes that permeate the content and subject of his work are also a reference to international politics, and specifically a society's ability to accept

war. Muñoz asks us to reflect on the atrocities that took the lives of many of his fellow countrymen, and consider, as he says, 'the routine of living, where both the past and present are plagued with daily violent events which are persistently repeated'. There is also a public programme of events during the exhibition, including talks by the curator and artist, film screenings, and other educational opportunities. **For a full programme, visit www.iniva.org**



DINGHY SAILING

Every Tues, 6pm till dusk & Sun, 10am-1pm. North London Sailing Association sessions at West Reservoir Centre, Stoke Newington, Green Lanes, N4. **Info: 020 7254 2315**

HACKNEY RUGBY CLUB

Every Tue, 7.30pm. Training at Springhill sports ground, E5. All abilities welcome. **Info: Morgan; 07791 446 947**

FOOTBALL FOR PARENTS AND TODDLERS

Every Sun, 11-11.45am. Drop-in session with qualified

coach in Clissold Park. **Info Emilio: 07967 322 376**

SPORTSHALL ATHLETICS

Every Sat, 11am-1pm. Indoor athletics for beginners, aged 8-13. Space, Falkirk St, N1. £1. **Info Des Ryner: 07956 375 078**

FOOTBALL TRAINING

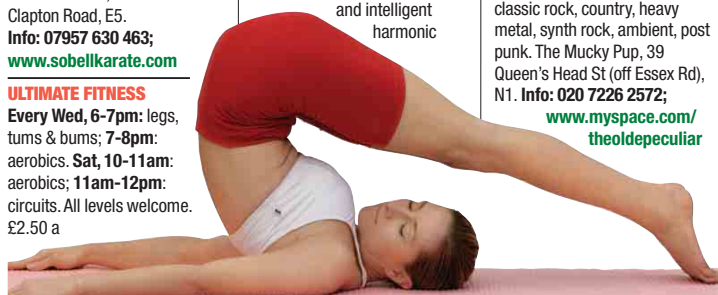
Every Sat, 11am-1pm. Sessions run by UEFA B coaches and sports development officers. For 7 to 13yrs. £2. Millfields Park (opposite Magnets Kitchens). **Info: 07904 849 940; kingsmeadccsc@fsmail.net**

HACKNEY CHESS CLUB

Every Sat eve, Sept - May. After a very successful season, the club are welcoming new players, all levels and ages. Their first and second teams reached the final of the National Club Cup, and the club has also enjoyed excellent league campaigns. Rochester Castle pub, Stoke Newington High Street. **Info: 020 7254 1500; nvnivs@gmail.com**

TAEKWONDO

Various afternoons & evenings. 7yrs+. Kids £40, Adults £50 per month. 60 Kingsland road, E2. **More info: 020 7033 4660; www.bozdogtaekwondo.com**



Don't miss our next issue
out on 23 June

**DON'T
MISS**



Three weeks of musical magic

REVIEW

Acclaimed jazz trio Malcolm Creese, Tim Garland and Gwilym Simcock are joined by world-class string players for Acoustic Triangle 3 Dimensions

By Paul Knipe

Spitalfields Summer Festival 2-20 June

The award winning Spitalfields Festival promises three summer weeks of extraordinary music to enliven, uplift, and entertain. The festival music will take place in a number of venues in the East End, including Spitalfields Market, Canary Wharf's Docklands Museum, and Shoreditch Church. Highlights include Westminster Abbey organist

James O'Donnell's rendition of Bach's Toccata and Fugue in D minor, alongside new works for organ and electronics at the Dutch Church on Wednesday 11; and the English premier of Rodion Shchedrin's The Sealed Angel sung by the Choirs of Gonville & Caius, Cambridge, and King's College London at Shoreditch Church on Saturday 14. His Majestys Sagbutts & Cornetts, an exploration of the antiphonal sounds of St Mark's Basilica in Venice at the time of the Gabriels and

Monteverdi, in Christ Church on Wednesday 18 is another choice offering. There are also plenty more events and concerts during the festival, including a number of world premiers from contemporary composers like Christopher Fox, Robert Szymanek, and Philip Cashian; and classics from the likes of Schubert, Wagner, Mozart, and Milhaud. **For a full programme and more information visit www.spitalfieldsfestival.org.uk or contact the Box Office on: 020 7377 1362. Ticket prices vary.**



THEATRE



Hysteria at the Barbican

HYSTERIA

Until 14 June. 3pm, 6pm, & 7.45pm. Engaging, tender and charming production exploring the lives of 19th century women interred in mental institutions. £12. 16yrs+. Barbican Centre, EC2Y. **Info: 020 7638 8891; www.barbican.org.uk**

HUNT

16-20 June, 10.30am and 1.30pm daily. A play concerned with exploitation of young people in extreme violence and war. Part of a week celebrating the contribution of refugees to the UK. Wilton's Music Hall, Graces Alley, E1. £5. **Info: 020 7539 3500; info@kazzum.org**

THE SMILIN STATE

Until 21 June. It's summer in an American mid-west town. A dishevelled agrarian father and son stand in the middle of their dead, recently repossessed, cornfield marking time while surviving on cup cakes and cola, waiting for the end of the world. Hackney Empire, 291 Mare Street, E8. **Info: 020 8985 2424; www.hackneyempire.co.uk**



NOTICEBOARD

LOVELONDON 2008 - GREEN HOUSES AND SMALL FOOTPRINTS

14 June, 10.30am-12.30pm, 5yrs+. Explore environmentally friendly building materials and methods. Free. Booking advised. Children under 14 must be accompanied by an adult. **Info: 0207 275 8555; mail@buildingexploratory.org.uk**

BLACK HISTORY SUMMER PROGRAMME

15 June, 3pm. Drama, An African's blood. 13yrs+. Historia Theatre Company present the story of the 20 year struggle to

abolish the slave trade from 1787 to 1807. **Info: 0870 444 3855; www.museumindocklands.org.uk**

HACKNEY CHILDREN'S CENTRES OPEN DAY

19 June, 11am-2pm. Find out about Children's Centres in your area. Enjoy free play, and get childcare advice and more. Hackney Town Hall. **Info: Grace; 07795 506 773; grace.graham@learningtrust.co.uk**

OLYMPICS COMMUNITY OBSERVERS EVENT

19 June, 6-7.30pm. Part of Hackney Museum's 'Mapping the Change' Project. Changes to the borough will be recorded in the run-up to the 2012 Olympics and Paralympics. This is your chance to contribute. **Info: 020 8356 3500; hmsuem@hackney.gov.uk**

ANNUAL FUNDRAISING DANCE

21 June, 8pm-3am. Playing the best in Reggae, Soul, Soca, and Revival a variety of music to suit all. £10 a ticket. Green Light Club, 223 Bow Road, E3. **Info: 020 8802 8404**

WINDRUSH@60

22 June, 5pm. Church service to celebrate diversity, and arrival of the SS Empire Windrush with its 492 Caribbean passengers in 1948. Free. Salvation Army Hall, 70 Mare St, E8. **Info: ian.rathbone@tiscali.co.uk**

OPEN GARDEN

22 June, 2-5pm. Enjoy the rambling roses, clematis and jasmine, the rustling bamboo, and tranquil sounds of the water fountain. Free. Donations to the National Gardens Scheme. Coffee, tea

SALE

Cartridge refills
Buy one get one free on all ink
Black from £8.99
Colour from £9.99
Brother and Samsung toners from £25.
JP & Canon toners from £29
Computer repairs £39.99 fixed
Refurbished PC & monitor from £79
Bogof offer ends 08/08
Conditions apply
FREE DELIVERY
Cartridge World,
163 Morning Lane E9 6LH
(Near Tesco) 020 8985 1010

and cakes will be available. 12 Bushberry Road, E9. **Info: 020 8985 6825.**

LUNCH CLUB

Every Wed, 12-3pm. 50yrs+. Free. Risen Christ & All Saints Church, 44 Overbury St, E5. More info: Jean John, Wayside Community Centre **Info: 020 8986 7531**

RIVERSIDE NURSERY

Going To Work?
Our small, happy, nursery now has vacancies for children 0-5 years. Riverside Close, Clapton, E5 9SP. Please call to arrange your childcare. **Tel: 020 8806 7143 or riverside.nursery@tiscali.co.uk**

CREATE 08 - GILLET SQUARE GAMES DAYS

Every Sat until 28 June, 2-5pm. Games from all over the world, with a final chess competition by local experts on 28 June. Young offenders institute ping pong club will host matches for the first and last games days. Free. Gillett Square, N16. **Info: gillettsquare.org.uk**

LONDON CHEST HOSPITAL SUMMER FAIR

13 July, 12pm-5pm. Come and help raise money for the hospital. Tombolas, BBQ, bric-a-brac, live entertainment, stalls, bouncy castle, raffles, beer marquee, reiki. Chest Hospital grounds, London E2. 40p; free parking.

Info: Pat or Robert on 020 8983 2345

BABY MASSAGE

Every Mon, 1.15pm-2.45pm. Strengthen the bond between you and your baby, while enjoying social interaction with other new parents. For babies up until crawling. **Info: 07989 302396; scaravelli.info@yahoo.co.uk**

YOUTH OUTREACH PROJECTS

Mon-Fri, 9-6pm. 13-19 yrs. Use new music studio and boxing ring. Day activities include paintballing, and interview techniques. For Clapton, Millfield, and Kingsmead estates. Free. Pedro Club, 175 Rushmore Rd, E5. **Info: 020 8985 3800; james.cook@rathbone.co.uk; www.rathboneuk.org**

ANIKA PATRICE PROJECT

Volunteers needed for people with learning disabilities, primarily from the African, Caribbean, Asian and Turkish communities to help improve the quality of life for people with learning disabilities and their parents/careers. 61 Leswin Road, Stoke Newington, N16. **Info: 020 7923 9033**

FORGET-ME-NOT (GARDEN SPECIALISTS)

Specialists in all aspects of soft/hard landscaping. Regular maintenance & all garden work undertaken. **For a free, affordable quote, call Malcolm on: 020 8361 2852, 07769 632 890; or e-mail: malcolmbeech@aol.com**

what'son

Been to something brilliant in Hackney? Send us a review and we'll publish it in Hackney Today. Content should be no longer than 250 words. Please include a contact telephone number. E-mail us at: **htnews@hackney.gov.uk**

We reserve the right to edit any material.

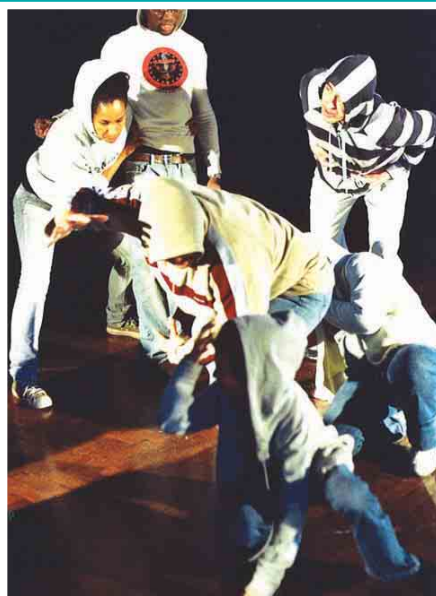
Competitions

Hackney Today offered readers a chance to win a great prize in issue 184.

The lucky winners of the National Opera competition are: C Hay, E9; G D Costa, E9; and D Leafe, E8. Congratulations.

FRESH IDEAS

Learning for the future with trains, plays and new diplomas

Gainsborough students worked with professional actors to produce *Can I Go Out?*

We're not staying in

All stories by **Sylvia Arthur**

Students from Gainsborough Primary School got to display their creative talents when a play they helped to write and produce debuted at the E9 school.

Can I Go Out? was developed by pupils and parents with help from local company, Immediate Theatre.

It aims to capture the reality of life today for children, young people and their families and confronts issues of street safety and 'what can be done to make a change'. After each performance, the audience

has the chance to respond to the story and try out ideas to resolve some of the issues raised.

Professional actors Clara Onyemere and Jotham Annan worked with the group and performed in the play.

The project began when the school's Parents' Group invited Penny Cliff, writer-in-residence with Immediate Theatre and Sanctuary Housing Association, to set up a weekly, after school drama workshop in playwriting and acting for parents and children.

Can I Go Out? forms part of Immediate Theatre's Big Blue Fence Project, which works with groups in E9 to reflect the views and issues of people living around the 2012 Olympic site.

Discovering a new way to learn

AN impressive delegation of VIPs visited Hackney Community College to learn more about new Diplomas for 14 to 19-year-olds – due to be introduced in schools and colleges from September.

Ed Balls, Secretary of State for Children, Schools and Families led the group as it toured the Shoreditch college, which will be one of the first in the country to offer the brand new qualifications.

He was joined by Minister for Schools, Jim Knight; Apprentice

winner, Tim Campbell; former Learning Trust chairman, Sir Mike Tomlinson; and Chairman Emeritus of Toyota, Sir Alan Jones.

After hearing tutors and parents' views on the new courses, the VIPs chatted with construction students to find out how the Diplomas could have helped them.

Ian Ashman, Hackney Community College Principal, said: "These new Diplomas really will transform the way that young people can learn and achieve. By working in partnership with



Ed Balls, Jim Knight and Tim Campbell (front, left to right) visit the HCC mechanics workshop

schools, we can deliver a more practical, skills-

focused curriculum, with high academic standards, giving students a better choice of options, either into employment, or on into higher education."

MORE INFO

For further details visit: www.dfes.gov.uk/14-19/

A quick guide to Diplomas

The Diplomas will offer a mix of theory and hands-on learning, and are being touted as an alternative to more academic GCSEs and A-levels. Three new Diplomas will be offered in Hackney schools

from September: Construction and the Built Environment; Society, Health & Development; and Creative & Media.

The courses can be studied at different levels, with GCSE and

A Level equivalency. They are industry-related, but not job specific. Eventually, 17 Diplomas will be offered with three levels of attainment: foundation, intermediate and advanced.

Train for work

CREATIVE pupils from Hackney have been involved in constructing an imaginary new railway from London to Cambridge.

The six students from Hackney Free and Parochial School were among teams from across London that presented their ideas to industry experts.

The event at the Institution of Mechanical Engineers was the climax of an innovative workshop series called 'Vision to Reality'. The aim was to set young people real work construction challenges and encourage creative thinking.

Thirty six Young, Gifted & Talented (YG&T) students living along the proposed Crossrail route from Maidenhead to Heathrow took part.

The Government-backed initiative is designed to

stimulate the brightest young learners, particularly under-achieving and disadvantaged students.

Those who took part were tasked with developing a strategy for constructing a hypothetical railway between London and Cambridge, one of Britain's most crowded rail lines.

Alex Cobb, from Hackney Free and Parochial School, said: "I really enjoyed working with the other students and found the station design part most interesting."

Geraldine Craig, Careers Advisor for Greater London, said: "There is such a wide choice of careers on offer such as architects, surveyors and engineers. We want to encourage more people to join this interesting and vital section of the industry."

020 7247 2428 / 020 7377 1072
 Best Computer Training www.WeAreOnline.co.uk

Your Local Learning Centre

Free Internet and E-mail course – Flexible times

If you are a complete beginner with computers or the Internet we can help you get started and enjoy the benefits they can bring to your life

One-week introduction to computers and the Internet

- Course starts every Monday
- 3 hours per day
- What you will learn
 - Using a computer
 - Understanding the Internet
 - Creating and sending e-mails
 - Searching the Internet
 - Using Word to type letters

FREE for beginners

| Course | Hours | Price | JSA** |
|------------|--------|--------|-------|
| Word | 12 hrs | £69.99 | FREE |
| Excel | 12 hrs | £69.99 | FREE |
| Access | 12 hrs | £69.99 | FREE |
| PowerPoint | 12 hrs | £69.99 | FREE |
| FrontPage | 12 hrs | £69.99 | FREE |
| Outlook | 12 hrs | £69.99 | FREE |
| Windows | 12 hrs | £69.99 | FREE |
| Internet | 3 hrs | £48 | FREE |
| E-mailing | 3 hrs | £48 | FREE |
| CLAIT | 60 hrs | £875 | FREE |
| ECDL | 90 hrs | £1,400 | FREE |
| ITQ | 10 wks | £2,900 | FREE* |

* If working and has less than 5 GCSE's
****Conditions:**
 The courses are free with evidence required for ID, JSA or Income support.

Brush up your English to help polish key reading, writing and understanding skills and prepare yourself for the nationally recognised Certificate in **Adult Literacy Level 1 or 2**. Each part of the course is designed to build your confidence in English and get you ready to take the Certificate test. Training times are flexible to suit you.

IDS (UK Online)
 155 Stoke Newington Road
 Hackney N16 8BP

Whitechapel Centre
 Suite 1.24 & 3.21
 65 Whitechapel Road
 Aldgate E1 1DU

Marcus Garvey Library
 Leisure Centre
 1 Philip Lane
 Tottenham N15 4JA



14th Annual Festival For Older People

5 June – 31 July 2008

Are you over 50? If so, Hackney's Festival for Older People is for you. We are offering a wide range of activities, workshops and daytrips. This is your opportunity to get involved, get active and make new friends.

There are a wide range of tickets available for daytrips to Brighton, Eastbourne, Fruit Picking, Hastings and Southend.

For your listings guide please contact the Community Resource Team on **020 7275 7092**, or visit the Council's website www.hackney.gov.uk/adults-and-older-people

Specific event tickets will be made available each day 10am – 3pm at:
 The Community Resource Team,
 Sir Robert Geffery Centre,
 153 Church Walk,
 Stoke Newington, N16 8QQ.



THE MABLEY GREEN BOULDER...

The Boulder, by artist **John Frankland**, is a public art project commissioned and developed by PEER with the support of Shoreditch Trust, Hackney Council and Core Arts. Standing four metres high and weighing around 100 tonnes, the Cornish granite boulder will be an impressive focal point at the centre of Mabley Green. You can get fit by climbing the Boulder, or you can use it as a landmark for meeting friends.

Survey work and preparation for the Boulder's foundations are due to take place in June with the Boulder due to be in place by July. A second Boulder will be installed in Shoreditch Park, at the same time providing a unique link across east and north Hackney.



MEET THE ARTIST

A QUESTION AND ANSWER SESSION WILL BE TAKING PLACE WITH JOHN FRANKLAND AT THE HACKNEY WICK COMMUNITY CENTRE ON THE 26TH JUNE AT 7:00PM. THE OLD BATHS, 80 EAST WAY, HACKNEY, LONDON, E9 5JH

FUTURE IDEAS FOR MABLEY GREEN

New ideas for Mabley Green are coming and we want you to be involved. In addition to The Boulder and the ongoing work to improve sports and changing facilities on the Green, we have plans for better play and recreational facilities. Please let us know if you would like to receive information on developments at Mabley Green by emailing David White at: david.white@hackney.gov.uk or by phoning 020 8356 3899.

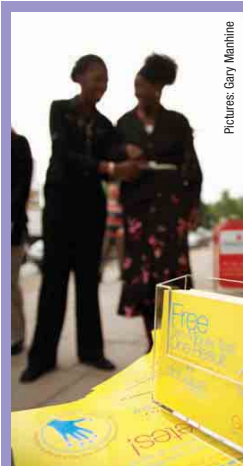
Artist's impression of the Mabley Green Boulder.



The Boulder is funded by REAP (Recreational and Environmental Action Programme), money from the London Development Agency linked to the 2012 Olympic and Paralympic Games. The Boulder is also supported by an Arts and Regeneration Grant from Deutsche Bank.

NEW SERVICE

This page was compiled with the help of Homerton Hospital, City & Hackney Primary Care Trust, and the East London NHS Foundation Trust

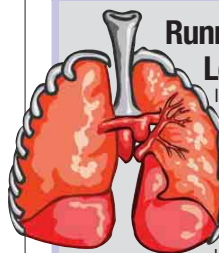


Pictures: Gary Mainline



Pharmacist Mukhtar Manji gives Meg Hillier MP a blood test at the service launch on 6 June (right); eye-catching advertising for the free pharmacy service (left)

NEWS IN BRIEF



Running – good for London’s chests

If you’re getting in shape this year, why not do it for a good cause? The Barts and the London Charity 10K takes place in Victoria Park on 15 June, starting at 11.30am. There is also a 3k fun run and a junior mile for runners aged 12 and under.

Both races will raise money for heart research at The London Chest Hospital, E2, and Trauma Unit at the Royal London Hospital, in Whitechapel.

There will be changing facilities, toilets, showers, refreshments, and supervised bag storage for runners, as well as a barbecue and entertainment for those who still have the energy after.

Although advanced entry is closed, there will be plenty of places available on the day for participants of all ages. Runners should aim to arrive at least an hour early to leave plenty of time to register and warm up.

Entry fees are £12 for adults and £3 for under-12s. For further details call: **020 8983 2345**; or e-mail: **pat.gray@bartsandthelondon.nhs.uk**

Consult on health issues

HACKNEY is looking for an organisation to set up and run the Local Involvement Network (LINK) – a new form of public consultation forum which will encourage local people to have their say over health and social care services in the borough.

The contract starts this September, with a maximum budget of £620,000 over three years. The deadline for applications is 10 July. For more information, visit: **www.teamhackney.org/commissioning**; or e-mail: **jane.woolley@hackney.gov.uk**

Leading the way for UK

All stories by **Siobhan Silbert**



PHARMACISTS in Hackney and the City are leading the fight against diabetes by becoming the first in the country to screen people at risk.

The service, which will also improve care for sufferers, is to be used as a blueprint for involving

pharmacies in the care of diabetes patients nationwide.

Under the new scheme, run by the City & Hackney Primary Care Trust (CHPCT), pharmacists will play a key role in diagnosis and treatment by monitoring blood pressure, glucose levels, body weight, and dispensing medication direct to patients.

Estimates suggest there could be as many as 3,000 undiagnosed diabetes

sufferers in Hackney and it’s hoped the new service will help to cut this number.

CHPCT Chief Executive, Jacqui Harvey, said: “Once again our pharmacists are stepping into the front line of care, and improving the value of their contact with patients. We’re delighted to offer residents easier access, and hope they will make use of the service.”

Shocking new figures predict that by 2025, there will be 540,000 Londoners

with the disease, according to charity Diabetes UK.

This represents a 46 per cent increase, which will be mostly due to rising numbers of overweight or obese people. The condition can lead to complications including heart disease, blindness, kidney disease and amputation.

MORE INFO

For further details: **www.diabetes.co.uk**

Bid to tackle addiction



A **FOUR-YEAR** strategy to tackle drug and alcohol abuse has been launched in Hackney.

The programme, produced by the Council’s Drug and Alcohol Action Team (DAAT), focuses on reaching out to the borough’s diverse communities.

Called ‘Achievement and Challenge: Tackling Drug and Alcohol Misuse’, the strategy builds on work the team are already involved in. It is hoped the plan will make it easier for people from all communities to seek help for addiction problems.

Over the past three years, DAAT has contacted and worked with over 10,000 people.

“I am a kind of bridge between the community and other services”

Waiting times for treatment in the borough are now down to just over one week, compared with a national target of three. The team also runs a

successful black and ethnic minority volunteering programme, and actively works with clients to help shape and improve services.

Zeynep Thirlwell, who was born and educated in Turkey, graduated from the programme in 2006 and is now a bilingual substance misuse worker at treatment agency Addaction.

She said: “There is a big stigma around drugs in the Turkish community. They suffer with language problems in getting access to services. I am a kind of bridge between them and other services which can help them.”



Substance misuse worker Zeynep Thirlwell (left) and a performance by Real Talk (above) at the launch event

Is your home **TOO BIG ?**

THE UNDEROCCUPATION CASH INCENTIVE SCHEME



For friendly and helpful advice about your options including possibilities of moving out of the borough, contact:

The Mobility Team, Christopher Addison House,
72 Wilton Way, London E8 1BJ

Phone: 0208 356 5752/5765/5769/2977/2978

Money to Help You Move





1



2



4



5



3

1. Thomas Fairchild's only book *The City Gardener*, published in 1722
2. Engraving of Old St Mary's Church, Stoke Newington, 1776
3. Colvestone Road School, 1981
4. Watercolour of Old St Mary's Church, Stoke Newington, c1800
5. Watercolour of Old St Mary's Church, Stoke Newington, c1800
6. Thomas Fairchild School in Hoxton, c1880
7. The Vegetable Sermon preached at St Leonard's church, Shoreditch, in 1730

What's in a name?

By **Sally England**

THE memory of some of Hackney's founding fathers still lives on in the names given to much loved streets and buildings.

In particular, many of our local school names pay tribute to those who helped shape the borough centuries ago. Here are just a few interesting examples:

Thomas Fairchild Primary School, in Napier Grove, recalls a pioneering nurseryman of the 17th century.

Fairchild established his nursery in Ivy Lane, Hoxton, in 1691, where he grew an extensive collection of grapes, in what is believed to be one of the last attempts at viticulture in England before the 20th century.

In his will, Fairchild left money to fund The Vegetable Sermon, which was preached at St Leonard's Church, Shoreditch, until the 1990s. Copies of two vegetable sermons and Fairchild's only book, *The City Gardener*, are held in the

Local Studies Library at Hackney Archives.

William Patten held the lease of Stoke Newington manor from around 1552. He was a scholar as well as working at the Exchequer as a teller.

Patten leased the manor from its owner, the

Prebendary of St Paul's Cathedral, until about 1569, and it was during his tenure that the manor house was rebuilt in brick. He was also responsible for rebuilding Old St Mary's Church, almost obliterating the original medieval stone building. As

Patten also added a schoolhouse onto the western aisle of the church in 1563, it is appropriate that he is today remembered in the name of one of Stoke Newington's primary schools.

Colvestone Primary School obviously takes its name from its location in Colvestone Crescent, but where does that name come from? Colvestone is a village in Norfolk, and the association with Hackney almost certainly came about through the Amherst family.

The Amhersts owned land in Norfolk and

married into the Tyssen family who were lords of the manor of Hackney, which also explains the naming of Tyssen Primary School in Oldhill Street.

Hackney Archives does not hold any school records, apart from those for Hackney Downs, but this taster offers a good picture of the different sorts of information that can be uncovered about local schools and the stories and people they often commemorate.

(The London Metropolitan Archives holds the records for the rest of the borough's schools.)



6



7

MORE INFO

Hackney Archives looks after Council administrative records and archives dating back to 1700. It also keeps records for individuals and organisations with links to Hackney. To learn more, call: **020 7241 2886**, or visit: www.hackney.gov.uk/archives

STREET TRADING

(SHOP FRONT TRADING AND TABLES AND CHAIRS ON THE STREET) and (MARKETS AND MARKET STALLS)



NOTICE IS HEREBY GIVEN THAT PURSUANT TO SECTION 27 OF THE LONDON LOCAL AUTHORITIES ACT 1990 (AS AMENDED) THE COUNCIL OF THE LONDON BOROUGH OF HACKNEY INTEND TO PASS A RESOLUTION IN THE FOLLOWING FORM:

“That the Council resolves to make Regulations prescribing conditions to be attached to licences as set out in appendices A and B of this report”.

These Regulations shall be applied as standard conditions to licences on the occasion of their grant or renewal. The Regulations will be applied as special conditions to all existing licences from 1st of January 2009 until the next renewal.

The Regulations apply to Licences for street trading by way of shop front trading and the placing of tables and chairs on the street within the London Borough of Hackney or to licences to engage in street trading within the London Borough of Hackney as appropriate.

The Regulations shall be known as the Street Trading (shop front trading and tables and chairs on the street) Regulations, in the case of appendix A and the Street Trading (markets and market stalls) Regulations in the case of appendix B

The report referred to will be a report made to the relevant officer or council committee containing the above resolution for determination.

The appendices contain regulations about which representations can be made in writing. A copy of the regulations may be obtained during normal office hours from: **Hackney Council, 81 Downham Road, London, N1 5TR** or viewed online at: www.hackney.gov.uk/markets

Anyone wishing to make representations can do so in writing before **7th of July 2008** to the address above. Reference SFMR

DATED 9TH JUNE 2008

OUTLINE PLANNING APPLICATION NO. – 2008/1050 – WOODBERRY DOWN

THIS IS A REVISED OUTLINE PLANNING APPLICATION TO THE PREVIOUS PROPOSAL (REF: 2007/0014)

ADDRESS OF PROPOSED DEVELOPMENT:

Woodberry Down Estate - London - N4 2SB being the land bounded by – Green Lanes (excluding 254 – 336 Green Lanes), the New River (North) (excluding 331-337a Seven Sisters Road), 456-484 Seven Sisters Road, Newnton Close, New River (South), East Reservoir, Lordship Road, West Reservoir and the John Scott Health Centre, Green Lanes.

Hackney Homes is applying to the London Borough of Hackney for planning permission for the redevelopment of Woodberry Down. This is a revised Outline Application with layout, scale and access being determined at this stage.

DESCRIPTION OF DEVELOPMENT

- demolition of existing buildings with the exception of St. Olave's Church, the Beis Chinuch Lebonos Girls School, reservoir centre, primary school and health centre.
- redevelop the site with –
- 4,684 homes, including 41 percent affordable, comprising:
 - 1-bed, 2-bed, 3-bed, 4-bed and 5-bed flats; and
 - 5-bed and 6-bed houses;
 - with associated car parking at an overall site provision rate of 50 percent;
- approximately 38,500m² of non-residential buildings and associated car parking, including:
 - 5194m² of retail buildings within classes A1-A5 including shops, cafes and restaurants;
 - 3144m² of class B1 business uses including offices;
 - 30,000m² of class C1, D1 and D2 uses including education, health centre, children's centre, community centres, youth centre;
 - provision of new civic space, public parks, open space, landscaping of the edges of the New River and the East and West Reservoirs;
 - construction of bridges across the New river;

- reduced width of Seven Sisters Road from 6 to 4 lanes; and
- related improvements to the public realm;
- formation of new access points to the new Woodberry Down Neighbourhood,
- the creation of new, and improvement of existing, cycle and pedestrian routes to and within Woodberry Down.

The revisions are as follows;

increase in education floor space; repositioning of cycle/pedestrian bridge between west reservoir and Haringey; re configuration of 'Woodberry Circus'; relocation of two bridges over New River; increase in footprints and heights of various buildings; provision of a new Health Centre and increase in residential units from 4664 to 4684.

The application is accompanied by an Environmental Statement.

Given the size of Woodberry Down it is proposed that development will take place in five separate phases. This Outline Planning Application will guide the overall redevelopment. Details such as the appearance of buildings and material are not being assessed at this time, this will occur at a later stage when separate applications are fully considered for each of the five phases.

Members of the public may view the planning application and associated documents, and information of consultation events at –

- the Planning Reception, 263 Mare Street, London E8 3HT, Monday to Friday 9.00am to 5.00pm
- on-line at www.hackney.gov.uk/planning

The consultation period for this application begins on **09TH JUNE 2008** and closes at 4.30pm on **07TH JULY 2008**. For telephone enquiries contact a Planning Case Officer on **020 8356 8042**

DATED: 09TH JUNE 2008

Invitation to Tender for a Host Organisation for a Hackney Local Involvement Network (LINK)



From April 1st this year, Local Involvement Networks (LINKs) in each local authority replaced patient and public involvement forums (PPIFs). Hackney Council's Partnership Directorate, on behalf of Team Hackney's Thriving Healthy Communities Partnership, is seeking to contract an organisation to host the Hackney LINK.

The task of the LINK will be to promote and support the involvement of local people in the commissioning, provision and scrutiny of health and social care services.

The LINK will do this by:

- finding out what people think about these services,
- presenting these views to those responsible for delivering or managing the services,
- facilitating the public monitoring and evaluation of care services,
- making reports and recommendations about how health and social care services could be improved.

The LINK itself will be an independent body which will determine what work it does but its focus will be on ensuring that services are shaped to meet people's needs, and that services are improved as a result of people's experiences.

The contract will commence in September 2008 and will run for three years, with a maximum budget of £620,000 over the three years.

Proposals can be submitted individually or in partnership with one or more organisations, and submissions must demonstrate that they are independent from health and social care statutory agencies.

See www.teamhackney.org/commissioning for further information and to download the tender document. Any queries relating to the tender document should be submitted by email to jane.woolley@hackney.gov.uk.

The closing date for submissions is 12 noon on Thursday, July 10.





Pupils put their best feet forward



Rich Johnson in action at Our Lady and St Joseph RC Primary School, Dalston

Extreme flying visitor

By **Gabriel Harriss**

Rich Johnson brought his extreme cycle show to borough schools, wowing his young audience with daring stunts.

But the 'RJ Ride Guide' tour also features advice on riding safely, using helmets, respecting pedestrians and looking after your bike.

The tour was organised by the Council's Road

Safety Team and reinforces work staff have been doing with youngsters.

Last year the team worked with over 14,000 children, offering road safety advice and information covering a range of issues from pedestrian skills, seat belt use and pre-driver education.

As well as working in schools, the team gets out into the community, giving advice on fitting car child seats, visiting Children's Centres, fathers' groups and other organisations.

They are also joining forces with a number of other agencies to organise a pre-driver event called Road Runners in July.



Youngsters enjoy their walk

Taking the healthy route

HUNDREDS of Hackney schoolchildren put their best foot forward for Walk to School Week last month.

Pupils from all over the borough ditched their

parents' cars and instead took the healthy option of walking with family and friends. The theme of this year's event was sound, and youngsters were

encouraged to explore their local environment by listening to all the different sounds, like birdsong, they might miss if they took the car to school.

Children picked up valuable road safety skills while doing their bit to tackle climate change.

Participating schools were entered in a draw to win a visit from the Cyclomag Roadshow – which is an opportunity for teachers and pupils to try some amazing bikes.

The winning school was De Beauvoir Primary School, so congratulations to them.

The week was part of a UK-wide campaign led by Living Streets to get families to leave their cars at home and walk to school.

NEWS IN BRIEF

Dalston traffic diversion

TRANSPORT for London (TfL) is planning major road works in Dalston this summer to allow the extension of the East London Line to Highbury & Islington.



The site where the new Dalston Junction station is being built

A section of Dalston Lane, which runs above the new line, is actually a Victorian road bridge and needs to be replaced. As Hackney Today went to press, TfL had not confirmed its plans. But it is likely Dalston Lane will close to all westbound traffic (towards Islington) from 5 July for around a year. To keep disruption to a minimum, TfL may keep one eastbound lane open at all times between Kingsland High Street and Ashwin Street.

Westbound traffic would be diverted along Queensbridge Road, then on to Richmond and Kingsland roads. All cyclists travelling west would use the same diversion.

Bus numbers 30, 38, 56, 242, 277, and N38 would also be diverted along this route.

Hackney Council is working with TfL to try to minimise disruption to residents, and is urging TfL to finalise plans and communicate them with residents.

Motorists and bus passengers using this route are advised to allow an extra 20 minutes for their journeys. Try to avoid using Dalston Lane as a through route, and use the TfL journey planner to find alternatives: www.tfl.gov.uk

For general enquiries, call London Travel Information on: **020 7222 1234**. For info about the East London Line, call: **0800 587 2441** or e-mail: overground@tfl.gov.uk



Crime on the Tube is down

Safer for passengers

CRIME has dropped on the Tube and Docklands Light Railway by 11 per cent this year, according to the latest figures.

Robberies have been cut by more than 50 per cent, with other reductions in violent crime, sexual offences, pick pocketing, criminal damage, and public disorder offences. Transport for London (TfL) welcomed the news and said continued investment in safety and security on the Tube network had helped deliver the reduction.

The British Transport Police (BTP) figures showed there were just 14 crimes for every million passenger journeys taken on the Tube network last year.

Tim O'Toole, Managing Director of London Underground, said: "The BTP have been doing an excellent job and our passengers should feel reassured by these statistics."

"Robbery has gone down by more than 50 per cent which is a real achievement, and much of the proactive work of the BTP on the Underground has helped to make it an unwelcoming environment for criminals."

"Crime is low on the Tube, but it is important that our passengers feel safe as they are travelling around London and we will continue to invest in safety and security."

In recent years, the number of BTP officers for the London Underground network has increased, as has CCTV.

TRAFFIC

TTRO/P169A. DALSTON LANE E8 BRIDGE REPLACEMENT TEMPORARY PROHIBITIONS AND WAITING RESTRICTIONS ROAD TRAFFIC REGULATION ACT 1984 - SECTION 14(1) AS AMENDED BY THE ROAD TRAFFIC (TEMPORARY RESTRICTIONS) ACT 1991

The Council of the London Borough of Hackney, with the agreement of Transport for London, HEREBY GIVES NOTICE that due to works required for the replacement of the Dalston Lane railway bridge E8, they intend to make an Order. The general effect of which would be only at such times and to such extent as regulatory traffic signs are displayed to provide for the following:-

1. Introduction of One Way
Dalston Lane in an easterly direction between its junctions with Kingsland Road and Kingsland High Street and Beechwood Road

Richmond Road in an westerly direction between Buxted Road and Kingsland Road (except for works vehicles requiring access to the East London Line Project depot)

2. Prohibition of Left or Right Turn manoeuvres
Ashwin Street – Right into Dalston Lane
Dalston Lane – Left into Ashwin Street

3. Temporary suspension of banned right turns
From Queensbridge Road – Into Richmond Road
For buses only from Kingsland High Street – Into Balls Pond Road
From Richmond Road – Into Kingsland Road

4. Prohibition of waiting loading and unloading
Richmond Road From a point 80 metres west of the western north side kerb-line of Buxted Road to the western kerb-line of Queensbridge Road

5. Temporary suspension of goods vehicles exceeding 7.5 tonnes maximum gross weight prohibition applying in Richmond Road between Queensbridge Road and Kingsland Road.

6. Prohibition of goods vehicles exceeding 7.5 tonnes maximum gross weight entering Buxted Road, Forest Grove, Celandine Drive and Holly Street except for loading or unloading.

7. The prohibitions and restrictions would not apply to any vehicle being used in connection with the execution of the said works, or being used for police, fire brigade or ambulance purposes in an emergency and anything done with the permission or at the direction of a police constable in uniform

8. The Order will operate on and between the following dates and times or the work has been completed whichever is sooner
5th July 2008 – 7th March 2009

9. Further information about this notice may be obtained by contacting the helpline on 0208 356 2987

DATED THIS 9TH DAY OF JUNE 2008

Tom McCourt, Assistant Director (Public Realm)
(The officer appointed for this purpose)



Legacy Now

What does the Legacy of the London 2012 Games mean for you?

To decide what legacy will really mean for London, we want your help and your views.

The London Development Agency (LDA) is currently developing the overall design plans for the Olympic Park and its neighbouring areas for after the Games. We want your knowledge, ideas and input to help develop the right design plans for the future.

Look out for us at the following summer events

21 June

Lee Valley Festival
Tottenham Festival and Carnival
at Bruce Castle Park
12.00 – 18.00

22 June

Tour de Waltham Forest
at Walthamstow Town Square
11.00 – 17.00

25 June

Hackney Town Hall Square,
10am – 7pm

5 & 6 July

London Youth Games
at Crystal Palace
9.00 – 18.00

12 & 13 July

Mayor's Newham Show
at Central Park
East Ham
14.00 – 20.00

13 July

RISE Festival
at Finsbury Park
12.00 – 20.30

19 July

Idea Store Whitechapel
9:00 – 18:00

20 July

Green Fair Festival
Lloyd and Aveling Park, Walthamstow
12.00 – 19.00

More information about opportunities for people to get involved will be available through the media and on our website www.legacy-now.co.uk or please feel free to contact us. Email: legacynow@lda.gov.uk Tel: 020 7593 9000

Hackney Council is consulting on South Shoreditch, Shoreditch High Street and Sun Street Conservation Areas

We would like your views on...

- The Conservation Area Appraisal documents which describe the history of each area and detail their special character
- The proposal to extend and combine South Shoreditch and Shoreditch High Street areas as a single Conservation Area

How to find out more

- Join us at a community briefing at 6.30 to 8.30pm, Wednesday 4 June at Shoreditch Town Hall, Council Chambers, 380 Old Street, London EC1V 9LT
- Come to one of the following drop-in sessions:
 - 10 June from 10-12 pm, Shoreditch Town Hall
 - 18 June from 2-4 pm, Shoreditch Town Hall
 - 23 June from 6 -8 pm, Shoreditch Town Hall

- Visit the planning reception, speak to the Duty Planning Officer and view the draft documents between 8.30am and 5.30pm, Monday to Friday, at 263 Mare Street, London, E8 3HT
- Visit our website - www.hackney.gov.uk/planning-consultation to view the draft documents
- Visit Hackney Central Library or Shoreditch Library to view the draft documents.
- Speak to a Conservation Officer – phone 020 8356 8089
- Email us: ConservationAreaConsultation@hackney.gov.uk stating Shoreditch as the subject
- Write to: Conservation Area Consultation, Urban Design and Conservation Team, Hackney Council, 263 Mare Street, London E8 3HT

The closing date for receipt of comments is 4.30 pm on Friday 4 July 2008.





Want to write a letter to the Editor?
E-mail: htnews@hackney.gov.uk

haveyoursay

Recipes straight from the ovens at Hoxton Apprentice

www.hoxtonapprentice.com



THIS is the latest of our regular recipes courtesy of the Hoxton Apprentice restaurant. Each issue will feature a favourite chosen by an apprentice, then prepared and presented by Head Chef, Torren Lewis. Today's recipe is a summer favourite. Of course you could buy ready-made burgers, but these are so easy to make, it won't take much longer than going to the shops. Homemade, grilled or barbecued burgers are fantastic and everyone likes them. And because this recipe uses lean mince, even dieters can have one.

Beef and Salsa Burgers

Serves 4

Preparation time
20 mins



Cooking time
20 mins



Ingredients

- 300g lean minced beef
- 50g wholemeal breadcrumbs
- 50g carrots, grated
- 1 small onion, grated
- Small handful fresh, flat-leaf parsley, chopped
- 1 tsp Worcestershire sauce
- 4 wholemeal burger buns
- Small pot tomato salsa (cheat & buy it if you don't want to make your own)

Method

- In a large bowl, mix together the mince, breadcrumbs, carrots, onions, parsley & Worcestershire sauce. Season well with salt & pepper.
- Shape the mixture into 4 burgers and place on a baking tray.
- Grill the burgers for 3-4 mins on each side until cooked through, then keep them warm
- Split each burger bun in half, then lightly toast, cut side up
- Fill the toasted buns with some salad and top with a burger and a good dollop of tomato salsa.

Top Apprentice tip: Look out for British beef when you are shopping for your meat and add some chopped, fresh chillis, or hot sauce, to the mince mix for a spicy sensation

The Hoxton Apprentice is a social enterprise set up to train unemployed Hackney people – both in the kitchen and front of house.

Six month apprenticeships prepare people for the workplace and give them the chance to gain an NVQ in hospitality. Profits are returned to Training For Life, the charity which operates the restaurant, to deliver more training for unemployed people.

If you would like to offer an apprentice a job, or become an apprentice yourself, call Patrick Lyster-Todd on: 020 7749 2805.

For more info, visit: www.hoxtonapprentice.com

HOXTON
apprentice



Hackney Community Resource Team volunteer Ken Borjehre (left) with Mr Francis, who he has been visiting since 2003

Conservation clues

RESIDENTS views are being sought about how to best preserve historic parts of Shoreditch.

The Council is proposing combining the existing South Shoreditch and Shoreditch High Street conservation areas into a single one.

Following a public consultation, the proposals will be reviewed in the light of residents' comments. The Conservation Area Appraisals (CAA) and boundary changes have to be discussed at a Council Cabinet meeting in Autumn, before they can be introduced.

So make sure you have your say at one of three drop-in sessions at Shoreditch Town Hall, Old Street, EC1, on:
• 10 June, 10am - 12pm
• 18 June, 2 - 4pm
• 23 June, 6 - 8pm.
Or call: 020 8356 8089;

e-mail: conservationareaconsultation@hackney.gov.uk (stating Shoreditch in the subject line). The deadline is 4 July.

For further details visit: www.hackney.gov.uk/conservation-areas

Snap up a survey

WIN £50 in high street vouchers or a digital camera – just by taking part in a short volunteering survey.

The Council is working with its partners to develop a volunteering strategy and wants to find out why people volunteer, in order to develop a strategy to support them. Visit: www.consultationfinder.com/hackney/ and go to the volunteering consultation.

Speak on special status

THE area around Northwold and Cazenove

roads has been identified by the Council, English Heritage, and local groups as an area of special architectural and historic interest.

As a result, it is proposed that a conservation area be created to protect it.

The area is a fine example of a planned, mid to late Victorian suburb. Its distinct character is created by the finely detailed houses, as well as open spaces and a 'leafy' feel.

Another big bonus is the green and pleasant front gardens that survive in many streets.

Have your say by speaking to a Conservation Officer on: 020 8356 8089; or e-mail: conservationareaconsultation@hackney.gov.uk

The deadline for comments is 4.30pm on 24 June. For further details visit: www.hackney.gov.uk/northwold_caa.htm

Sudoku

For solutions see: www.hackney.gov.uk/hackneytoday

| Easy | | | | | | Medium | | | | | |
|------|---|---|---|---|---|--------|---|---|---|---|---|
| 1 | 2 | | | | 6 | | 5 | 1 | | 2 | 4 |
| | | | 6 | | | | 4 | | | 6 | |
| | 9 | | | | 3 | 4 | | | 3 | | 7 |
| 6 | | | 5 | | 8 | 6 | 2 | | | | 3 |
| | 1 | 2 | | | 7 | 7 | 8 | | | | |
| | 7 | 4 | 5 | | 1 | 3 | 9 | | | 8 | 4 |
| | | 8 | 3 | 1 | | 1 | | | | 2 | 9 |
| | | | | | 9 | | | | 8 | 6 | 7 |
| | | | | 9 | | 4 | | 5 | | | 8 |
| | | | | | 7 | | | 2 | 1 | 3 | 5 |
| | | 1 | | | | | | | | | |

Hackney is a fast improving Council, serving one of the UK's most diverse populations. Regeneration is improving housing, public services and transport links. Crime is falling. Exam results are up. The Olympics are coming ...



Job vacancies Community Services

Senior Project Worker (Male*)

£26,928-£28,494

Ref: HC_792

Closing date: 20 June 08

We are looking for ambitious people who want to develop leadership skills in Hackney's Community Projects team. You will manage a small team, and have experience of working with people with learning disabilities.

Based at a local sports centre and canoeing club, you will lead the sportsABILITY project to help develop activities. You will understand relevant legislation such as the Community Care Act and be responsible for good communication with our partners.

Project Worker (Male*)

£22,086-£23,916

Ref: HC_189

Closing date: 20 June 08

This is your chance to join an innovative project for people with learning disabilities focused on performing arts activities. You will provide direct support to people with learning difficulties, develop learning activities in conjunction with

colleagues and clients, and develop plans. You must be a practical person with an interest in music, dance, theatre, and helping people express themselves. You will also need experience of supporting people with learning disabilities and planning creative activities.

*Section 7 (2) (ba) of the Sex Discrimination Act applies.

Neighbourhoods and Regeneration

Team Manager Building Control (Operations)

£45,000-£47,652

Ref: HC_218

Closing date: 23 June 08

This is your chance to get involved with a range of residential and commercial building projects on the City fringe, including the construction of the Olympic Park across five boroughs. You will be a senior building control officer and will manage the Building Control Service, organising work processes to deliver on time, on budget, and to agreed quality standards. You'll provide expert advice on technical issues while building a stable client base. You must be a member of RICS or equivalent, and be practised in the strategic planning of high quality customer-focused services.

MORE INFO

To apply visit:
www.hackney.gov.uk/jobs-careers, call: 0845 313 3140, or e-mail [appropriate reference] @tribal.recruitmail.com including your full address & contact phone number



WHY HACKNEY?

With nearly 30 per cent of the Olympic Park in the borough, Hackney will play host to the 2012 Olympic Games



Children and Young People's Services

Consultant Social Worker

£40,722-£43,275

Ref: CYP/LC/CSW/71

Closing date: 24 June

This post offers practitioners the chance to lead the social work unit to ensure that we continue to keep children safe, reduce the number of looked after children, and provide intensive and therapeutic support for families with children on the edge of care. This post is entirely new and gives you the opportunity to develop your professional skills and to use evidence based approaches in order to have a positive impact on children and young people in the borough.

MORE INFO

To apply for jobs in Children and Young People's Services visit: www.jobs.hackney.gov.uk

Job Profile Alan Hawes

Head of Building Control, talks to Hackney Today about the Building Control Team Manager role



What are the main responsibilities of the role?

The Building Control service is responsible for regulating building works within Hackney. The primary aim is to ensure that buildings provide safe and healthy environments for people in and around them, and that buildings and their services are accessible, energy efficient and sustainable. In particular the post holder will manage the Dangerous Structures Service that aims to respond within one hour to assess buildings that are in immediate danger of

collapse, in close partnership with the emergency services and other Council Services.

Who would be the ideal candidate?

The successful candidate will be an excellent communicator and leader, managing five experienced surveyors who operate in specific areas across the borough, ensuring the service is delivered on time, on budget and to agreed standards. They will support senior management, deliver an excellent performance managed approach, and inspire and motivate others.

Why is it a good opportunity to work in Hackney?

Hackney Building Control is responsible for approving hundreds of building regulation applications each year. It is currently working in partnership with the other Olympic boroughs, to regulate the building works across the Olympic Park for the 2012 Games. This provides an opportunity to gain the unique experience of working on the Olympic project and managing surveyors who will be monitoring and regulating the construction of major venues in the Olympic Park.

Richard House
London's First Children's Hospice



Family Support Workers x2

for Bengali/Somali community in Tower Hamlets

£16,933 – £20,070 + up to £3,220 regional allowance + company car (work and private use)

2 year fixed term contract

This is a post working in partnership with Richard House to ensure continuity in care and a choice in place of care.

This is an exciting opportunity for Family Support Workers to join our team offering high quality practical and emotional support mainly to Bengali/Somali families who have a child with a life threatening or terminal condition. The service offered is individually tailored, flexible and responsive. You will work predominantly in Tower Hamlets and on occasion in neighbouring boroughs providing a non-medical service where every day is different. One day you could be providing practical support at home, the next you could be supporting a child in hospital.

If you have significant professional experience of working with children and families, good interpersonal and relationship building skills, a full driving licence and the ability to work at a fast pace in stressful situations, we would love to hear from you. You also need to be bi-lingual in English and Sylheti and/or Somali and be able to write fluently in English.

A childcare qualification (NVQ Level 2/3/NNEB/BTEC or equivalent) is desirable. Applications from candidates with experience of young children and/or children with special needs or sick children would be most welcome.

www.rainbowtrust.org.uk

Registered Charity No: 1070532

For an application form, job description and person specification go to www.rainbowtrust.org.uk or email: recruitment@rainbowtrust.org.uk or call 01372 220073.

Closing date for completed application forms: 20th June 2008.

Interview date: 26th June 2008.

These posts are community based but you will be required to travel one day per week to our office in Romford.

We will only accept applications on the Rainbow Trust application form.

An enhanced CRB disclosure will be required for this post. We are an equal opportunities employer and we welcome applications from all sections of the community.

The Mayor & Councillors

Councillors are elected by Hackney residents and serve for four years. The last borough elections were in May 2006.

Councillors have a range of responsibilities, including helping to oversee the Council and its services. They all hold advice surgeries where you can meet your local representative and ask them to take up issues that may be of concern.

Generally they can help with Council related matters, but if the issue is the responsibility of another person or organisation, they can often point you in the right direction and tell you who you need to see.

Hackney has 57 councillors representing areas called wards – illustrated in the map opposite.

Please note: some councillors do not hold surgeries during the school Easter and summer holidays.

To check which councillor covers your area, or confirm surgery times, call: 020 8356 3373. More info: www.hackney.gov.uk/l-mayor-cabinet-councillors.htm

ADVICE SURGERY ON CRIME AND COMMUNITY SAFETY ISSUES

Clr Nkafo, 5-6pm, 1st Monday each month, Hackney Town Hall, Mare St, E8. To book an appointment call: 020 8356 3211

Hackney's wards in alphabetical order

1. Brownswood
2. Cazenove
3. Chatham
4. Clissold
5. Dalston
6. De Beauvoir
7. Hackney Central
8. Hackney Downs
9. Haggerston
10. Hoxton
11. Kings Park
12. Leabridge
13. Lordship
14. New River
15. Queensbridge
16. Springfield
17. Stoke Newington Central
18. Victoria
19. Wick



- North East Neighbourhood Committee
- Shoreditch Neighbourhood Committee
- Stoke Newington Forum
- Homerton Forum

The Mayor



Jules Pipe

Hackney has an executive Mayor, Jules Pipe, who is not a councillor, but is directly elected by the entire borough.

The Mayor is the political leader of the Council, overseeing the budget and all Council services. Civic and ceremonial duties are undertaken by the Speaker of the Council who is elected annually from the borough's 57 councillors. Clr Ian Rathbone is the current Speaker.

1. BROWNSWOOD



Clr Darren Parker
1st Fri each month, 9-10am, Robin Redmond Resource Centre, 440 Seven Sisters Rd, Woodberry Down Estate, N4.
Clr Feryat Demirci
1st Sat each month, 11am-12pm, Arnwell Court Community Hall, Green Lanes, N4.
Clr Brian Bell
No surgery. To book an appointment with Clr Bell, call Members' Support on: 020 8356 3373.



2. CAZENOVE



Clrs Joseph Stauber
1st Wed, 5-6pm, Simon Marks Jewish Primary School, 75 Cazenove Road, N16.
Clr Ian Sharer
1st & 3rd Thurs, 10.30-11.30am, North London Muslim Community Centre, 68 Cazenove Rd, N16.
Clr Dawood Akhoun
1st & 3rd Sat each month, 10am-12.30pm, NLMCC, 68 Cazenove Rd, N16.
2nd & 4th Sat each month, 10am-12.30pm, Stamford Hill Community Hall, N16.
Clr Akhoun can visit household constituents. To book an appointment call: 020 8806 1147.



3. CHATHAM



Clr Luke Akehurst
2nd Fri each month, 6.30-7.30pm, Hackney Town Hall, Mare St, E8.
Clr Sally Mulready
Last Fri each month, 7-8pm, Hackney Town Hall, Mare St, E8.
Clr Guy Nicholson
3rd Fri each month, 6.30-7.30pm, Jack Dunning Community Hall, Homerton Row, E9.



4. CLISSOLD



Clr Linda Smith
1st Mon each month, 7-8pm, Hawkesley Court Community Hall, N16.
Clr Karen Alcock
2nd Fri each month, 6-7pm, Milton Gardens Community Hall, Milton Gardens Estate, N16.
3rd Mon each month, 7-8pm, Burma Court Community Hall, Burma Rd, N16. (Clrs Alcock & Smith on a rota basis).
Clr Mischa Boris
(no surgeries in March)
2nd Tues each month, 6.30-7.30pm, Milton Gardens Community Hall, N16.
3rd Fri each month, 6.30-7.30pm, Frank Haley Community Rm, Burma Rd, N16.



5. DALSTON



Clrs Sophie Linden, Nargis Khan & Angus Mulready-Jones
(on a rota basis)
1st Thurs each month, 6.30-7.30pm, Evelyn Court, Anhurst Rd, E8.
2nd Sat each month, 12noon-1pm, Community Hall, Millard Close, Shellgrove Estate, N16.
3rd Fri each month, 6.30-7.30pm, CLR James Library, 24-30 Dalston Lane, E8.



6. DE BEAUVOIR



Clrs Robert Chapman, Gulay Icoz & Christopher McShane
2nd Sat each month, 11am-12noon, Coleville Community Hall, 35 Branch St, N1.
3rd Sat each month, walkabout surgery in the afternoon.



E-mail these councillors at: debeauvoir@hackney-labour.org.uk
Alternatively, call Members' Services on: 020 8356 3373.

7. HACKNEY CENTRAL



Clrs Samantha Lloyd, Alan Laing & Vincent Stoops
(on a rota basis)
1st Sat each month, 10-11am, Pembury Senior Citizens Club, Hindrey Rd, E8.
2nd Sat each month, 11am-12noon, Wilton Community Hall, Greenwood Rd, E8.
4th Sat each month, 11am-12noon, Mountford Community Hall, Cecilia Rd, E8.



Clr Laing is also available at the Town Hall. To book an appointment call: 020 8356 3373.

8. HACKNEY DOWNS



Clr Faizullah Khan
1st Sat each month, 11am-12noon, Gooch House, Kenninghall Rd, E5.
Clr Michael Desmond
1st Sun each month, 11am-12noon, Nightingale Estate Office, 7 Olympus Sq, E5. Clr Desmond is also available at the Town Hall, call: 020 8356 3373.
Clr Sem Moema
2nd Sun each month, 11am-12noon, Landfield Community Hall, Landfield Estate, Steilman Close, E5.
Last Sun each month, roving surgery. Also available at the Town Hall. Call: 020 8356 3373.



9. HAGGERSTON



Clrs Afolasade Bright, Barry Buitekant & Jonathan McShane
(on a rota basis)
1st Mon each month, 7-8pm, Shoreditch Town Hall, EC1.
1st Thurs each month, 6.30-7.30pm, Haggerston Community Centre, Haggerston Rd, E8.
2nd Thurs each month, 7-8pm, Fellows Court Community Hall, Weymouth Terrace, E2.
3rd Thurs each month, 6.30-7.30pm, Goldsmith's Community Hall, Goldsmith's Sq, E2.
4th Sat each month, 11am-12noon, VLC Centre, Whiston Rd, E2.



10. HOXTON



Clr Clayton McKenzie
2nd Tues each month, 6-7pm, The Bell Club, Bowling Green Walk, Pitfield St, N1.
Clr Carole Williams
2nd Mon each month, 5.30-6.30pm, 16a Malcolm House, Arden Estate, N1.
Clr Philip Gianville
3rd Wed each month, 6-7pm, Provost Community Hall, Murray Grove, N1.
3rd Sat of every month, 11am-12noon, The Bell Club, Bowling Green Walk, Pitfield St N1.
Clr Gianville can also be contacted on: 07967 116 537.



11. KINGS PARK



Clr Sharon Patrick
1st Fri each month, 6.30-7.30pm, Hackney Marsh Partnership, Kingsmead Cabin, Kingsmead Way, E9.
Can visit disabled or household constituents, to book an appointment call: 020 8356 3373.
Clr Saleem Siddiqui
1st & 3rd Fri each month, 7-8pm, Vi Forrester Hall (behind the housing office), Gilpin Rd, E5.
Clr Julius Nkafo
3rd Sat each month, 12noon-1pm, Kingsmead Tenants Hall, 5/6 Templemead House, Homerton Rd, E9.



12. LEABRIDGE



Clrs Linda Kelly, Deniz Oguzkanli & Ian Rathbone
1st Sun each month, 11am-12noon, Tenants Association Hall, Beechlime Estate, Prout Rd, E5.
2nd Sat each month, 1-2pm, Wayside Community Centre, 24 Chatsworth Rd, E5.
4th Sat each month, 1-2pm, Community Hall, Mount Estate, Mount Pleasant Lane, E5.
4th Sat each month, 2-3pm, Community Flat, 10 Detmold Rd, Jack Watts Estate, E5.



13. LORDSHIP



Clrs Bernard Aussenberg, Simon Tesler & Mathew Coggins
(on a rota basis)
1st Sun each month, 11.30am-12.30pm, Peter Collins Memorial Hall, Holmleigh Rd Estate, N16.
3rd Sun each month, 2-3pm, Stoke Newington Library, Church Street, N16.



Clr Coggins can be contacted on: 07794 419 301.

14. NEW RIVER



Clrs Maureen Middleton
1st Sun each month, 11.30am-12.30pm, TA Flat, 1 Wyesdale House, Woodberry Down Estate, N4.
4th Sun each month, 11.30-12.30am, Ben Simons Community Hall, 1-66 Lincoln Court, Bethune Rd, N16.
Clr Middleton can be contacted on: 020 7249 9155 or 07930 575 912.
Clrs Harvey Odze & Simche Steinberger
(on a rota basis)
2nd Mon each month, 4-5pm, Stamford Hill Library, Portland Ave, N16. Clr Odze is available Mon-Thurs only. He can be contacted on: 07790 902 513 or at: harvey.odze@hackney.gov.uk



15. QUEENSBRIDGE



Clrs Thomas Price, Emma Plouvier & Patrick Vernon
(on a rota basis)
1st Sat each month, 10-11am, Queensbridge Leisure Centre, 30 Holly St, E8.
3rd Sat each month, 10-11am, Regents Pensioners Hall, 30 Brougham Rd, E8.



You can e-mail these councillors direct. Alternatively, call Members' Services on: 020 8356 3373.

16. SPRINGFIELD



Clrs Jacob Landau, Shuja Shaikh & Michael Levy
(on a rota basis)
1st and 3rd Sun each month, 11.30am-12.30pm at Webb Estate Community Hall, Clapton Common, E5.



17. STOKE NEWINGTON CENTRAL



Clrs Rita Krishna, Jamie Carswell & Muttalip Unluer
(on a rota basis)
1st, 2nd and 4th Sat each month, 10-11am, Yorky Grove Estate Community Hall, Gunster Rd, N16 (except Bank Holiday weekends).



18. VICTORIA



Clr Daniel Kemp
1st Sat each month, 10.30-11.30am, Pitcairn Hall (entrance in Mare St), Pitcairn House, Frampton Park Estate, E9 (disabled access).



Clr Katie Hanson
2nd Wed each month, 7-8pm, New Kingshold Community Centre, Primrose Sq, E9 (disabled access).



Clr Geoff Taylor
3rd Wed each month, 11am-12pm, Salvation Army Building, 70 Mare St, E8 (disabled access).

19. WICK



Clrs Jessica Webb, Christine Boyd & Christopher Kennedy
(on a rota basis)
1st Sun each month, 12noon-1pm, Wick OAP Hall, Lavington Close, Trowbridge Estate, E9.
3rd Sun each month, 12noon-1pm, Vaine House, Gascoyne Estate, Cassland Road, E9.





Advertise in Hackney Today.
Call 020 8356 3445 or email
htads@hackney.gov.uk
We offer very competitive rates for all
advertisements including recruitment,
licences and statutory notices.

LICENSING

MESSAGE/SPECIAL TREATMENTS Licence Notice is given that Andrew Charalambous has applied to the London Borough of Hackney for a Special Treatment Licence for the premises **APRICOTS GROUND FLOOR SHOP 139 BLACKSTOCK ROAD N4 2JW** Anyone wishing to oppose the application must give notice in writing to the Licensing Services Manager, London Borough of Hackney 263 Mare Street London E8 3HT within **THREE WEEKS** from the date of publication of this Notice specifying the grounds for opposition. Persons objecting to the grant of a licence must be prepared to attend a hearing before a Committee of the Council.

DATED: 09/06/08

Notice is given that **GINGER PIG** applied to Hackney Council for a premises licence at **99 LAURISTON ROAD E9 7HJ** in order that the following licensable activities can take place: Sale by retail of alcohol between the hours of 9.00am-21.00 Monday to Saturday, 9.00am to 18.00 Sunday. Opening hours of the premises between the hours of 9.00am-21.00 Monday to Saturday, 9.00am to 18.00 Sunday.

The licence register listing details of the application is held at the Licensing Service 263 Mare Street London E8 3HT (Tel 020 8356 4970). Details are also available on line at www.hackney.gov.uk/licensing. Any representations against the application must be made in writing and received by the Licensing Service at the above address by no later than the 27/06/08. Residents and businesses in the vicinity of the premises, or their representatives, may make representations on licensing objectives grounds only, i.e. **THE PREVENTION OF CRIME AND DISORDER, THE PREVENTION OF PUBLIC NUISANCE, PUBLIC SAFETY AND THE PROTECTION OF CHILDREN FROM HARM**. Copies of all representations will be sent to the applicant. It is an offence liable on conviction to a fine up to £5000 for an applicant to knowingly or recklessly make a false statement in connection with an application.

DATED: 09/06/08

Notice is given that Mr Onur Yelken of **KALYON GRILL MEZE EMPORIUM** applied to Hackney Council for a music licence at the premises **234-236 HOXTON STREET N1 5LX**. The licence register listing details of the application is held at the Licensing Service 263 Mare Street London E8 3HT (Tel 020 8356 4970). Details are also available on line at www.hackney.gov.uk/licensing. Any representations against the application must be made in writing and received by the Licensing Service at the above address by no later than the 27/06/08. Residents and businesses in the vicinity of the premises, or their representatives, may make representations on licensing objectives grounds only, i.e. **THE PREVENTION OF CRIME AND DISORDER, THE PREVENTION OF PUBLIC NUISANCE, PUBLIC SAFETY AND THE PROTECTION OF CHILDREN FROM HARM**. Copies of all representations will be sent to the applicant. It is an offence liable on conviction to a fine up to £5000 for an applicant to knowingly or recklessly make a false statement in connection with an application.

DATED: 09/06/08

Notice is given that we Mr Sawney Alexander & Mr Wayne Lewin have applied to Hackney Council to vary the premises licence at **133-135 STOKES NEWINGTON ROAD N16 8BT**

In order that the following licensable activities can take place: Live Music, Recorded Music, Performances of Dance, anything of a similar description to that falling within (e), (f) or (g). Making music, Dancing, Entertainment of a similar description to that falling within (i) or (j). Provision of Late Night Refreshment & Supply of Alcohol. Monday to Thursday 12.00 until 23.00. Friday & Saturday 12.00 until 04.00. Sunday 12.00 until 00.30.

The licence register listing details of the application is held at the Licensing Service 263 Mare Street London E8 3HT (Tel 020 8356 4970). Details are also available on line at www.hackney.gov.uk/licensing

Any representations against the application must be made in writing and received by the Licensing Service at the above address by no later than the 26/06/08. Residents and businesses in the vicinity of the premises, or their representatives, may make representations on licensing objectives grounds only, i.e. **THE PREVENTION OF CRIME AND DISORDER, THE PREVENTION OF PUBLIC NUISANCE, PUBLIC SAFETY AND THE PROTECTION OF CHILDREN FROM HARM**. Copies of all representations will be sent to the applicant. It is an offence liable on conviction to a fine up to £5000 for an applicant to knowingly or recklessly make a false statement in connection with an application.

DATED: 09/06/08

Notice is given that John Evans and Sandra Evans applied to Hackney Council to vary premises licence at **ON THE ROCKS 25 KINGSLAND ROAD, E2 8AA**, in order to make the following variation to the licence: (a) to extend the hours during which the sale of alcohol and the provision of regulated entertainment may take place on Friday and Saturday of each week until 0600 on the following morning (currently 0200) (b) To authorise the provision of late night refreshment on Thursday and Sunday of each week from 2300 until 0200 on the following morning, and (c) to authorise the provision of late night refreshment on Friday and Saturday of each week from 2300 until 0500 on the following morning.

The licence register listing details of the application is held at the Licensing Service 263 Mare Street London E8 3HT (Tel 020 8356 4970). Details are also available on line at www.hackney.gov.uk/licensing

Any representations against the application must be made in writing and received by the Licensing Service at the above address by no later than the 27/06/08. Residents and businesses in the vicinity of the premises, or their representatives, may make representations on licensing objectives grounds only, i.e. **THE PREVENTION OF CRIME AND DISORDER, THE PREVENTION OF PUBLIC NUISANCE, PUBLIC SAFETY AND THE PROTECTION OF CHILDREN FROM HARM**. Copies of all representations will be sent to the applicant. It is an offence liable on conviction to a fine up to £5000 for an applicant to knowingly or recklessly make a false statement in connection with an application.

DATED: 09/06/08

Message/Special Treatments Licence. Notice is given that **SHOREDITCH SPA** has applied to the London Borough of Hackney for a Special Treatment Licence for the premises **151 HOXTON STREET, LONDON, N1 6PJ**. Anyone wishing to oppose the application must give notice in writing to the Licensing Services Manager, London Borough of Hackney 263 Mare Street London E8 3HT within **THREE WEEKS** from the date of publication of this Notice, specifying the grounds for opposition. Persons objecting to the grant of a licence must be prepared to attend a hearing before a Committee of the Council.

DATED: 09/06/08



TRAFFIC

TTRO /U348B FRAMPTON PARK ROAD E8 TEMPORARY PROHIBITION OF WAITING ROAD TRAFFIC REGULATION ACT 1984 – SECTION 14(1) AS AMENDED BY THE ROAD TRAFFIC (TEMPORARY RESTRICTIONS) ACT 1991

The Council of London Borough of Hackney HEREBY GIVES NOTICE that due to planned **BUILDING WORKS** within **FRAMPTON PARK ROAD AND LODDIGES ROAD E8** they have made an order. The general effect of which will be only at such times and to such extent as regulatory traffic signs are displayed to:-

1. Revoke U348 in its entirety in favour of U348a and U348b
2. Temporary introduce a prohibition of Waiting Loading Unloading at any time along the following roads:
Loddiges Road North west side - From its junction with Frampton Park Road to a point approximately 55 metres north east of that point
Loddiges Road South east side - Between points approximately 19 metres and 23 metres south west of a point in line with the intersection of the north eastern kerb line of Frampton Park Road
3. Temporary introduce a prohibition of Waiting at any time Frampton Park Road North west side - Between points approximately 10 metres and 22 metres south west of a point in line with the intersection of the north eastern kerb line of Frampton Park Road
4. The restrictions will not apply to vehicles being used in connection with the said works, being used in the service of a local authority in pursuance of statutory powers or used for fire brigade, ambulance, or purposes in an emergency and anything done with the permission or at the discretion of a Police Constable in uniform.
5. The restrictions referred to in paragraphs (1) and (2) above will not apply so as to prevent vehicles gaining ingress to, or egress from the premises on or adjacent to the closed length of road in so far as such ingress or egress is reasonably practicable without undue interference with the execution of the said works.
6. The Order will operate on and between the following dates and times or until the work has been completed whichever is sooner 9th June, 0800 hrs, 7th December 2009, 1600 hrs
7. Further information about this notice may be obtained by contacting the helpline on 0208 356 2897

DATED THIS 9TH JUNE 2008
Tom McCourt Assistant Director (Public Realm)
(The officer appointed for this purpose)

TTRO /P167B MILBORNE STREET E9 TEMPORARY PROHIBITION OF DRIVING

The Council of London Borough of Hackney HEREBY GIVES NOTICE that due to planned **BUILDING WORKS** within **MILBORNE STREET E9** they have made an order. The general effect of which will be only at such times and to such extent as regulatory traffic signs are displayed to:-

1. Prohibition of driving Milborne Street - From its junction with Elsdale Street in a north easterly direction to its junction with Milborne Street north western section
2. Prohibition of pedestrians - Milborne Street north west side Between points approximately 34 metres and 71 metres north east of its junction with Elsdale Street
3. The diversion route for the footpath will be along the opposite side
4. The restriction will not apply to vehicles being used in connection with the said works or used for fire brigade, ambulance, or purposes in an emergency and anything done with the permission or at the discretion of a Police Constable in uniform.
5. The restrictions referred to in paragraphs (1) and (2) above will not apply so as to prevent vehicles gaining ingress to, or egress from the premises on or adjacent to the closed length of road in so far as such ingress or egress is reasonably practicable without undue interference with the execution of the said works.
6. The Order will operate on and between the following dates and times or until the work has been completed whichever is sooner 9th June, 0800 hrs, 7th December 2009, 1600 hrs
7. Further information about this notice may be obtained by contacting the helpline on 0208 356 2897

DATED THIS 9TH JUNE 2008
Tom McCourt Assistant Director (Public Realm)
(The officer appointed for this purpose)

ROAD TRAFFIC REGULATION ACT 1984 – SECTION 14(1) AS AMENDED BY THE ROAD TRAFFIC (TEMPORARY RESTRICTIONS) ACT 1991

The Council of London Borough of Hackney HEREBY GIVES NOTICE that due to planned **CRANE OPERATIONAL WORKS** within **MILBORNE STREET E9** they have made an order. The general effect of which will be only at such times and to such extent as regulatory traffic signs are displayed to:-

1. Prohibition of driving Milborne Street - From its junction with Elsdale Street in a north easterly direction to its junction with Milborne Street north western section
2. Prohibition of pedestrians - Milborne Street north west side Between points approximately 34 metres and 71 metres north east of its junction with Elsdale Street
3. The diversion route for the footpath will be along the opposite side
4. The restriction will not apply to vehicles being used in connection with the said works or used for fire brigade, ambulance, or purposes in an emergency and anything done with the permission or at the discretion of a Police Constable in uniform.
5. The restrictions referred to in paragraphs (1) and (2) above will not apply so as to prevent vehicles gaining ingress to, or egress from the premises on or adjacent to the closed length of road in so far as such ingress or egress is reasonably practicable without undue interference with the execution of the said works.
6. The restrictions referred to in paragraphs (1) and (2) above will apply to the dates as indicated paragraph (7) or by prior permission from the London Borough of Hackney between the dates of 9th June 2008 and 8th September 2008
7. The Order will operate on and between the following dates and times or until the work has been completed whichever is sooner

| DATE | TIME | DATE | TIME |
|-----------------|----------|-----------------|----------|
| 9th June 2008 | 0800 hrs | 10th June 2008 | 1600 hrs |
| 7th July 2008 | 0800 hrs | 8th July 2008 | 1600 hrs |
| 4th August 2008 | 0800 hrs | 5th August 2008 | 1600 hrs |

Further information about this notice may be obtained by contacting the helpline on 0208 356 2897

DATED THIS 9TH JUNE 2008
Tom McCourt Assistant Director (Public Realm)
(The officer appointed for this purpose)

TTRO /P166B SPURSTOWE ROAD E8 TEMPORARY PROHIBITION OF PEDESTRIANS ROAD TRAFFIC REGULATION ACT 1984 – SECTION 14(1) AS AMENDED BY THE ROAD TRAFFIC (TEMPORARY RESTRICTIONS) ACT 1991

The Council of London Borough of Hackney HEREBY GIVES NOTICE that due to planned **BRIDGE REMEDIAL WORKS** within **SPURSTOWE ROAD E8** they have made an order. The general effect of which will be only at such times and to such extent as regulatory traffic signs are displayed to:-

1. Prohibition of pedestrians Spurstowe Road north west side From a point in line with the south west kerline of Spurstowe Road in a south westerly direction along its entire length
Spurstowe Road south east side From a point in line and directly opposite with the south west kerline of Spurstowe Road in a south westerly direction along its entire length
2. The restriction will not apply to vehicles being used in connection with the said works or used for fire brigade, ambulance, or purposes in an emergency and anything done with the permission or at the discretion of a Police Constable in uniform.
3. The restriction referred to in paragraph (1) above will not apply so as to prevent vehicles gaining ingress to, or egress from the premises on or adjacent to the closed length of road in so far as such ingress or egress is reasonably practicable without undue interference with the execution of the said works.
4. The Order will operate on and between the following dates and times or until the work has been completed whichever is sooner

| DATE | TIME | DATE | TIME |
|---------------------------------|------|----------------|----------|
| 15th June 2008 2000 hrs | | 15th June 2008 | 0500 hrs |
| And on consecutive nights until | | | |
| 25th June 2008 2000 hrs | | 25th June 2008 | 0500 hrs |

Further information about this notice may be obtained by contacting the helpline on 0208 356 2897

DATED THIS 9TH JUNE 2008
Tom McCourt Assistant Director (Public Realm)
(The officer appointed for this purpose)

TTRO /P165B SPURSTOWE TERRACE E8 TEMPORARY PROHIBITION OF PEDESTRIANS ROAD TRAFFIC REGULATION ACT 1984 – SECTION 14(1) AS AMENDED BY THE ROAD TRAFFIC (TEMPORARY RESTRICTIONS) ACT 1991

The Council of London Borough of Hackney HEREBY GIVES NOTICE that due to planned **BUILDING WORKS** within **SPURSTOWE TERRACE E8** they have made an order. The general effect of which will be only at such times and to such extent as regulatory traffic signs are displayed to:-

1. Prohibition of pedestrians Spurstowe Terrace North East side - Between points approximately 14 metres and 31 metres south east of a point in line with the south east kerb line of Dalston Lane
2. The diversion route for the footpath will be along the opposite side
3. The restriction will not apply to vehicles being used in connection with the said works or used for fire brigade, ambulance, or purposes in an emergency and anything done with the permission or at the discretion of a Police Constable in uniform.
4. The restriction referred to in paragraph (1) above will not apply so as to prevent vehicles gaining ingress to, or egress from the premises on or adjacent to the closed length of road in so far as such ingress or egress is reasonably practicable without undue interference with the execution of the said works.
5. The Order will operate on and between the following dates and times or until the work has been completed whichever is sooner

5. The Order will operate on and between the following dates and times or until the work has been completed whichever is sooner

| DATE | TIME | DATE | TIME |
|---------------|----------|-------------------|----------|
| 9th June 2008 | 0800 hrs | 8th December 2008 | 1600 hrs |

Further information about this notice may be obtained by contacting the helpline on 0208 356 2897

DATED THIS 9TH JUNE 2008
Tom McCourt Assistant Director (Public Realm)
(The officer appointed for this purpose)

TTRO /P170A. THEYDON ROAD E5. TEMPORARY PROHIBITION OF PEDESTRIANS. ROAD TRAFFIC REGULATION ACT 1984 – SECTION 14(1) AS AMENDED BY THE ROAD TRAFFIC (TEMPORARY RESTRICTIONS) ACT 1991

The Council of London Borough of Hackney HEREBY GIVES NOTICE that due to planned **REFURBISHMENT WORKS** within **THEYDON ROAD E5** they intend to make an order. The general effect of which will be only at such times and to such extent as regulatory traffic signs are displayed to:-

1. Prohibition of pedestrians
Theydon Road Between points approximately 53 metres and 65 metres north of a point in line with the northern kerline of Mount Pleasant Hill
West Side
- Theydon Road Between points approximately 73 metres and 98 metres north of a point in line with the northern kerline of Mount Pleasant Hill
West Side

2. The restriction will not apply to vehicles being used in connection with the said works or used for fire brigade, ambulance, or purposes in an emergency and anything done with the permission or at the discretion of a Police Constable in uniform.
3. The restrictions referred to in paragraph (1) above will not apply so as to prevent vehicles gaining ingress to, or egress from the premises on or adjacent to the closed length of road in so far as such ingress or egress is reasonably practicable without undue interference with the execution of the said works.
4. The Order will operate on and between the following dates and times or until the work has been completed whichever is sooner

| DATE | TIME | DATE | TIME |
|----------------|----------|----------------|----------|
| 23rd June 2008 | 0700 hrs | 26th June 2008 | 1600 hrs |

Further information about this notice may be obtained by contacting the helpline on: 0208 356 2897

DATED THIS 9TH JUNE 2008
Tom McCourt Assistant Director (Public Realm)
(The officer appointed for this purpose)

TTRO /P173A. ST MARKS RISE E8. TEMPORARY PROHIBITION OF PEDESTRIANS. ROAD TRAFFIC REGULATION ACT 1984 – SECTION 14(1) AS AMENDED BY THE ROAD TRAFFIC (TEMPORARY RESTRICTIONS) ACT 1991

The Council of London Borough of Hackney HEREBY GIVES NOTICE that due to planned **CONSTRUCTION WORKS** within **ST MARKS RISE E8** they intend to make an order. The general effect of which will be only at such times and to such extent as regulatory traffic signs are displayed to:-

1. Prohibition of pedestrians
St Marks Rise Between points approximately 20 metres East Side and 45 metres in a general southerly direction from its junction with Colvestone Crescent

2. The diversion route for the footpath shall be as proposed on site
3. The restriction will not apply to vehicles being used in connection with the said works or used for fire brigade, ambulance, or purposes in an emergency and anything done with the permission or at the discretion of a Police Constable in uniform.
4. The restriction referred to in paragraph (1) above will not apply so as to prevent vehicles gaining ingress to, or egress from the premises on or adjacent to the closed length of road in so far as such ingress or egress is reasonably practicable without undue interference with the execution of the said works.
5. The Order will operate on and between the following dates and times or until the work has been completed whichever is sooner

| DATE | TIME | DATE | TIME |
|----------------|----------|----------------|----------|
| 23rd June 2008 | 0800 hrs | 25th July 2008 | 1600 hrs |

Further information about this notice may be obtained by contacting the helpline on: 0208 356 2897

DATED THIS 9TH JUNE 2008
Tom McCourt Assistant Director (Public Realm)
(The officer appointed for this purpose)

TTRO /P171A. EAST ROAD (A1200) N1. TEMPORARY PROHIBITION OF PEDESTRIANS. ROAD TRAFFIC REGULATION ACT 1984 – SECTION 14(1) AS AMENDED BY THE ROAD TRAFFIC (TEMPORARY RESTRICTIONS) ACT 1991

The Council of London Borough of Hackney HEREBY GIVES NOTICE that due to planned **CONSTRUCTION WORKS** within **EAST ROAD (A1200) N1** they intend to make an order. The general effect of which will be only at such times and to such extent as regulatory traffic signs are displayed to:-

1. Prohibition of pedestrians
East Road From its junction with Bevensden Street in a north South east side easterly direction to its junction with the unnamed access road, a distance of approximately 88 metres
Bevensden Street From its junction with East Road in a general easterly direction for a distance of approximately 63 metres

2. The diversion route for the footpath will be along the opposite side

3. The restriction will not apply to vehicles being used in connection with the said works or used for fire brigade, ambulance, or purposes in an emergency and anything done with the permission or at the discretion of a Police Constable in uniform.

4. The restrictions referred to in paragraphs (1) above will not apply so as to prevent vehicles gaining ingress to, or egress from the premises on or adjacent to the closed length of road in so far as such ingress or egress is reasonably practicable without undue interference with the execution of the said works.

5. The Order will operate on and between the following dates and times or until the work has been completed whichever is sooner

| DATE | TIME | DATE | TIME |
|----------------|------|----------------|----------|
| 28th June 2008 | 0700 | 29th June 2008 | 1700 hrs |

6. Further information about this notice may be obtained by contacting the helpline on: 0208 8356 2897

DATED THIS 9TH DAY OF JUNE 2008

Tom McCourt, Assistant Director (Public Realm)
(The officer appointed for this purpose)

LONDON BOROUGH OF HACKNEY. THE HACKNEY (WAITING AND LOADING RESTRICTIONS). (AMENDMENT NO.19) ORDER 2008. TRO 367

1. NOTICE IS HEREBY GIVEN that on 6th June 2008 the Council of the London Borough of Hackney made the above-mentioned Order under sections 6 and 124 of and Part IV of Schedule 9 to the Road Traffic Regulation Act 1984 as amended by the Local Government Act 1985 and the Traffic Management Act 2004.

2. The general effect of the Order will be to reconcile waiting restriction definitions throughout Zone A.

3. Copies of the Order, which will come into force on 11th June 2008 and of other documents giving more detailed particulars of the Order, can be inspected during normal office hours on Mondays to Fridays inclusive, until the expiration of a period of six weeks from the date on which the Order is made, in the reception area, London Borough of Hackney, 263 Mare Street, London, E8 3HT, or on line at <http://www.hackney.gov.uk>. Further information may be obtained by contacting Helpdesk on 020 8356 2897.

4. If any person wishes to question the validity of the Order, or of any provision contained therein on the grounds that it not within the powers conferred by the Road Traffic Regulation Act 1984 or that any requirement of the Act or of any instrument under the Act has not been complied with, that person may, within six weeks of the date on which the Order is made, apply for the purpose to the High Court.

DATED THIS 9TH DAY OF JUNE 2008.

Tom McCourt, Assistant Director (Public Realm)
(The officer appointed for this purpose)

LONDON BOROUGH OF HACKNEY. THE HACKNEY (WAITING AND LOADING RESTRICTIONS). (AMENDMENT NO. 20) ORDER 2008 TRO 356

1. NOTICE IS HEREBY GIVEN that on 6th June 2008 the Council of the London Borough of Hackney made the above-mentioned Order under sections 6 and 124 of and Part IV of Schedule 9 to the Road Traffic Regulation Act 1984 as amended by the Local Government Act 1985 and the Traffic Management Act 2004.

2. The general effect of the Order will be to reconcile on site waiting restrictions operating "at any time" in the entire length of Staff Street.

3. Copies of the Order, which will come into force on 11th June 2008 and of other documents giving more detailed particulars of the Order, can be inspected during normal office hours on Mondays to Fridays inclusive, until the expiration of a period of six weeks from the date on which the Order is made, in the reception area, London Borough of Hackney, 263 Mare Street, London, E8 3HT, or on line at <http://www.hackney.gov.uk>. Further information may be obtained by contacting Helpdesk on 020 8356 2897.

4. If any person wishes to question the validity of the Order, or of any provision contained therein on the grounds that it not within the powers conferred by the Road Traffic Regulation Act 1984 or that any requirement of the Act or of any instrument under the Act has not been complied with, that person may, within six weeks of the date on which the Order is made, apply for the purpose to the High Court.

DATED THIS 9TH DAY OF JUNE 2008.

Tom McCourt, Assistant Director (Public Realm)
(The officer appointed for this purpose)

LONDON BOROUGH OF HACKNEY. THE HACKNEY (WAITING AND LOADING RESTRICTIONS). (AMENDMENT NO.17) ORDER 2008. TRO 197

1. NOTICE IS HEREBY GIVEN that on 6th June 2008 the Council of the London Borough of Hackney made the above-mentioned Order under sections 6 and 124 of and Part IV of Schedule 9 to the Road Traffic Regulation Act 1984 as amended by the Local Government Act 1985.

2. The general effect of the Order will be to introduce waiting restrictions operating at any time into certain sections of the following roads: Beanacre Close, Brinkworth Way, Cresset Road, Felstead Street, Felstead Road, Merriam Avenue, Prince Edward Road, Retreat Place, Trowbridge Road and Trowbridge Road (Access Road).

3. Copies of the Order, which comes into force on 11th June 2008 and of other documents giving more detailed particulars of the Order, can be inspected during normal office hours on

Mondays to Fridays inclusive, until the expiration of a period of six weeks from the date on which the Order is made, in the reception area, London Borough of Hackney, 263 Mare Street, London, E8 3HT, or on line at <http://www.hackney.gov.uk>. Further information may be obtained by contacting Helpdesk on 020 8356 2897.

4. If any person wishes to question the validity of the Order, or of any provision contained therein on the grounds that it not within the powers conferred by the Road Traffic Regulation Act 1984 or that any requirement of the Act or of any instrument under the Act has not been complied with, that person may, within six weeks of the date on which the Order is made, apply for the purpose to the High Court.

DATED THIS 9TH DAY OF JUNE 2008.

Tom McCourt, Assistant Director (Public Realm)
(The officer appointed for this purpose)

LONDON BOROUGH OF HACKNEY. THE HACKNEY (PARKING PLACES) (H ZONE) (NO.1) ORDER 200*. THE HACKNEY (WAITING AND LOADING RESTRICTIONS) (AMENDMENT NO.1) ORDER 200*. THE HACKNEY (FREE PARKING PLACES) (DOCTORS). (AMENDMENT NO.1) ORDER 200*. THE HACKNEY (LOADING BAY) (AMENDMENT NO.1) ORDER 200*. TRO365.

1. NOTICE IS HEREBY GIVEN that the Council of the London Borough of Hackney propose to make the above-mentioned Orders under sections 6, 45, 46, 49 and 124 of and Part IV of Schedule 9 to the Road Traffic Regulation Act 1984 as amended by the Local Government Act 1985.

2. The general effect of the Orders would be to-

(a) amend the layout and operation of certain existing parking places and loading bays in all roads throughout the "H" Controlled Parking Zone; and

(b) amend the layout and times of operation of certain sections of waiting restrictions in all roads throughout the "H" Controlled Parking Zone.

3. Copies of the Orders, and of other documents giving more detailed particulars of the Orders, can be inspected during normal office hours on Mondays to Fridays inclusive until the end of a period of 6 weeks from the date on which the Orders are made or the Council decides not to make the Orders, in the reception area, London Borough of Hackney, 263 Mare Street, London, E8 3HT, or on line at <http://www.hackney.gov.uk>. Further information may be obtained by contacting Helpdesk on 020 8356 2897.

4. Any objections or other representations about any of the proposed Orders should be sent in writing to the Assistant Director (Public Realm) at the address specified in paragraph 3 above until the expiration of a period of 21 days from the date on which this Notice is published. All objections must specify the grounds on which they are made.

DATED THIS 9TH DAY OF JUNE 2008.

Tom McCourt, Assistant Director (Public Realm)
(The officer appointed for this purpose)

LONDON BOROUGH OF HACKNEY. THE HACKNEY (PARKING PLACES) (AMENDMENT NO.1) ORDER 200*. THE HACKNEY (WAITING AND LOADING RESTRICTIONS). (AMENDMENT NO.1) ORDER 200*. TRO 370 AND TRO 371

1. NOTICE IS HEREBY GIVEN that the Council of the London Borough of Hackney propose to make the above-mentioned Orders under sections 6, 45, 46, 49 and 124 of and Part IV of Schedule 9 to the Road Traffic Regulation Act 1984 as amended by the Local Government Act 1985 and the Traffic Management Act 2004.

2. The general effect of the Orders would be to replace 7 metres of resident bay with waiting restrictions operating "at any time" outside No 27 Queen Elizabeth Walk

3. Copies of the Orders, and of other documents giving more detailed particulars of the Orders, can be inspected during normal office hours on Mondays to Fridays inclusive until the end of a period of 6 weeks from the date on which the Orders are made or the Council decides not to make the Orders, in the reception area, London Borough of Hackney, 263 Mare Street, London, E8 3HT, or on line at <http://www.hackney.gov.uk>. Further information may be obtained by contacting Helpdesk on 020 8356 2897.

4. Any objections or other representations about either of the proposed Orders should be sent in writing to the Assistant Director (Public Realm) at the address specified in paragraph 3 above until the expiration of a period of 21 days from the date on which this Notice is published. All objections must specify the grounds on which they are made.

DATED THIS 9TH DAY OF JUNE 2008

Tom McCourt, Assistant Director (Public Realm)
(The officer appointed for this purpose)

LONDON BOROUGH OF HACKNEY. THE HACKNEY (PARKING PLACES) (AMENDMENT NO.1) ORDER 200*. TRO 369

1. NOTICE IS HEREBY GIVEN that the Council of the London Borough of Hackney propose to make the above-mentioned Order under sections 45, 46, 49 and 124 of and Part IV of Schedule 9 to the Road Traffic Regulation Act 1984 as amended by the Local Government Act 1985.

2. The general effect of the Order would be to replace 10 metres of existing permit bays with business bays outside Nos. 1-3 Arleigh Rd.

3. Copies of the Order, and of other documents giving more detailed particulars of the Order, can be inspected during normal office hours on Mondays to Fridays inclusive until the end of a period of 6 weeks from the date on which the Order is made or the Council decides not to make the Order, in the reception area,

London Borough of Hackney, 263 Mare Street, London, E8 3HT, or on line at <http://www.hackney.gov.uk>. Further information may be obtained by contacting Helpdesk on 020 8356 2897.

4. Any objections or other representations about the proposed Order should be sent in writing to the Assistant Director (Public Realm) at the address specified in paragraph 3 above until the expiration of a period of 21 days from the date on which this Notice is published. All objections must specify the grounds on which they are made.

DATED THIS 9TH DAY OF JUNE 2008

Tom McCourt, Assistant Director (Public Realm)
(The officer appointed for this purpose)

LONDON BOROUGH OF HACKNEY. THE HACKNEY (PARKING PLACES) (AMENDMENT NO.14) ORDER 2008. THE HACKNEY (WAITING AND LOADING RESTRICTIONS). (AMENDMENT NO.18) ORDER 2008. TRO 359 AND TRO 360

1. NOTICE IS HEREBY GIVEN that on 6th June 2008 the Council of the London Borough of Hackney made the above-mentioned Orders under sections 6, 45, 46, 49 and 124 of and Part IV of Schedule 9 to the Road Traffic Regulation Act 1984 as amended by the Local Government Act 1985 and the Traffic Management Act 2004.

2. The general effect of the Orders will be to remove all residents bays from Christina Street and introduce waiting restrictions operating "at any time" on its north side, throughout its entire length.

3. Copies of the Orders, which come into force on 11th June 2008 and of other documents giving more detailed particulars of the Orders, can be inspected during normal office hours on Mondays to Fridays inclusive, until the expiration of a period of six weeks from the date on which the Orders are made, in the reception area, London Borough of Hackney, 263 Mare Street, London, E8 3HT, or on line at <http://www.hackney.gov.uk>. Further information may be obtained by contacting Helpdesk on 020 8356 2897.

4. If any person wishes to question the validity of either of the Orders, or of any provision contained therein on the grounds that it not within the powers conferred by the Road Traffic Regulation Act 1984 or that any requirement of the Act or of any instrument under the Act has not been complied with, that person may, within six weeks of the date on which the Orders are made, apply for the purpose to the High Court.

DATED THIS 9TH DAY OF JUNE 2008

Tom McCourt, Assistant Director (Public Realm)
(The officer appointed for this purpose)



PLANNING

EC2

19 CHARLOTTE ROAD, LONDON, EC2A 3SG Installation of a banner sign between the ground and first floor. 2008/1146 Affects the Setting of a Conservation Area

1-5 CURTAIN ROAD LONDON EC2A 3J Partial demolition of existing office/restaurant (including retention of concrete frame only). Erection of six storey building plus basement to provide 50 bedroom hotel with restaurant/bar on ground floor and restaurant/bar with dining terrace at roof level. Alteration to existing access on Curtain Road. REVISED 2006/3490 Affects the Setting of a Conservation Area

1-5 CURTAIN ROAD LONDON EC2A 3J Conservation area consent for partial demolition of existing office/restaurant (including retention of concrete frame only). 12 connection with erection of six storey building plus basement to provide 50 bedroom hotel with restaurant/bar on ground floor and restaurant/bar with dining terrace at roof level. Alteration to existing access on Curtain Road. REVISED 2006/3491 Affects the Setting of a Conservation Area

E1

138 - 139 SHOREDITCH HIGH ST LONDON E1 6JF Alterations including the installation of a new shopfront. 2008/0841 Affects the Setting of a Conservation Area

167 - 169 KINGSLAND ROAD LONDON E2 8AL Conservation Area Consent for demolition existing Doctor's and Dentist surgeries. 2008/1294 Conservation Area Consent

167 - 169 KINGSLAND ROAD LONDON E2 8AL Demolition of existing building and erection of doctor's & Dentist surgery (918sqm and 9 residential flats) (4 x 2, 4 x 3 & 1 x 4 bed units.) 2008/0735 Affects the Setting of a Conservation Area

E5

REAR OF 211 LOWER CLAPTON ROAD LONDON E5 8EG Erection of a first floor extension to the two residential units at the rear of 211 Lower Clapton Road. 2008/1027 Affects the Setting of a Conservation Area

E8

414 KINGSLAND ROAD LONDON E8 4AA Erection of two storey rear extension, and change of use of the first floor from offices to residential to provide x 1 two bedroom flat and x 1 one bedroom flat 2008/0354 Affects the Setting of a Conservation Area

408 MARE STREET LONDON E8 1HP Change of use and alterations to format two bed flat over ground floor betting shop 2008/1091 Affects the Setting of a Conservation Area

408 MARE STREET LONDON E8 1HP Listed Building Consent for alterations to form a two bed flat over ground floor betting shop. 2008/1092 Affects Setting of a Listed Building

82 DALSTON LANE LONDON E8 3AH Change of use of ground floor

studio and two bed flat located on first and second floors. Erection of new third floor mansard roof and new shop front to form a 6 bedroom bed- and breakfast. 2008/1259 Affects the Setting of a Conservation Area

74 BROADWAY MARKET, LONDON FIELDS, HACKNEY E8 4QJ Alterations including the erection of a first floor rear extension with access to the existing roof terrace; bricking up of rear window and installation of new louvre to the rear 2008/1166 Affects the Setting of a Conservation Area

E9

103A LAURISTON ROAD LONDON E9 7HJ Erection of single storey B1 office building on existing Tarmac Drive. 2008/1264 Affects the Setting of a Conservation Area

14 WARNEFORD STREET LONDON E9 7NG Erection of a single-storey ground floor rear extension 2008/0900 Affects the Setting of a Conservation Area

(UNIT 13-20) 50 HOMERTON HIGH STREET LONDON E9 1JA Change of use of property to a private function venue opening hours 11:00-23:30 from Mon-Wed. 11:00 to 01:30 on Thursday. 11:00-04:00 Friday and Saturday and 18:00-23:00 on Sundays. 2007/3030 Major Development

77-79 VICTORIA PARK ROAD HACKNEY LONDON E9 7NA Front Garden: Works to trees the subject of a tree preservation order No 1 1987. 4 x Tilia Europea - pollard to original pollard points. 2008/1154 Affects the Setting of a Conservation Area

N1

11 UFTON GROVE LONDON N1 4HG Erection of a single-storey lower ground floor extension to the rear; excavation to enlarge existing light well. 2008/1179 Affects the Setting of a Conservation Area

24 MURRAY GROVE LONDON N1 7QN Variation of Condition 2 of Planning Application reference: 2007/0988 for alterations to access points and reconfiguration of parking spaces. 2008/1273 Major Development

REAR OF 124 HOXTON STREET LONDON N1 6SH Demolition of existing single storey building and erection of replacement two storeys building providing 2 x 2 bed flats. 2008/0635 Affects the Setting of a Conservation Area

N16

36 & 38 GILDA CRESCENT LONDON N16 6JP No. 36 Erection of a front porch; first floor side extension; alterations to the roof to include a front, side and rear roof extension. No. 38 Erection of a ground floor rear extension with a suqcah roof; alteration to the side to create new door openings; erection of front porch; first floor side extension; alteration to the roof to include front, side and rear roof extension. 2008/0581 Major Development

21 STAMFORD HILL LONDON N16 5TU Erection of a two-storey rear building to provide 2 x 1 bed flats, together with the installation of external staircases; the erection of a new third floor mansard roof extension to provide 1 x 1 bed flat and enclosed stairwell at rear of first, second and third floor level and the provision of sheltered cycle store and refuse and recycling enclosure to the front, including demolition of single storey rear extension and roof. 2008/1151 Affects the Setting of a Conservation Area

21 STAMFORD HILL LONDON N16 5TU Demolition of single storey rear extension and roof. 2008/1153 Conservation Area Consent

London Borough of Hackney, Notice under the Town and Country Planning Acts and Related Orders
The Applications can be inspected between 9am and 5pm at 263 Mare Street, London E8 3HT. They can also be viewed on the following website: www.hackney.gov.uk/planning.
Representations should be made in writing within 21 days to the Development Control Manager, 263 Mare Street E8 3HT, London. All representations will be acknowledged in writing.
Sue Foster, Assistant Director Regeneration and Planning.



MEETINGS

COUNCIL MEETINGS

| | |
|---|--------|
| June 10 - Governance Sub-Committee | 2.00pm |
| June 11 - Licensing and Resources Scrutiny Commission | 7.00pm |
| June 11 - Health in Hackney Scrutiny Commission | 7.00pm |
| June 12 - Licensing Sub-Committee | 2.00pm |
| June 12 - Audit Sub-Committee | 6.30pm |
| June 12 - Living in Hackney Scrutiny Commission | 7.00pm |
| June 12 - Regeneration and Social Inclusion Scrutiny Commission | 7.00pm |
| June 16 - Members Training and Development | 7.00pm |
| June 17 - Cabinet Procurement Committee | 4.30pm |
| June 18 - Overview and Scrutiny Board | 7.00pm |
| June 19 - Licensing Sub-Committee | 7.00pm |
| June 23 - Cabinet | 6.00pm |

ALL MEETINGS AT HACKNEY TOWN HALL, MARE STREET, E8. INFO: 020 8356 3316/3302/3441, OR: WWW.HACKNEY.GOV.UK



www.bbk.ac.uk
0845 601 0174

“Choosing Birkbeck has been one of the greatest decisions I have made in my life.”

Chukwudu Performance Studies

London's evening university

Choose from over 1000 University of London certificates and short courses taught part-time in the evening.

To book your place at the Open Evening or for a full list of courses:

visit www.bbk.ac.uk/hackney
email info@bbk.ac.uk
call 0845 601 0174

London's ONLY specialist provider of part-time, evening higher education. Prestigious University of London qualifications. World-class research environment. Ranked number one by students*.

*National Student Survey 2006 and 2007, for overall student satisfaction in London.

Open Evening
26 June 2008,
4-7.30pm